




ON THE SQUARE



The Quarterly Magazine of the McLean County Museum of History
June-July-August 2023 Volume 55, Number 2

Community Pride

page 3

History Makers Gala

page 4

Gateway to the Wider World

page 7

Growing Community Partnerships

page 6

New Director of Volunteers

page 8



Also inside this issue:

Announcements & New Members	2
Civic Season	3
Meet Eric Hansen	8
New to Collections	10
A Unique Opportunity.	12
Calendar of Events	14
Crafting History	15
Mystery History	16

With thanks to our magazine sponsor:





200 N. Main St., Bloomington, IL 61701
Phone 309-827-0428 Fax 309-827-0100
www.mchistory.org

Museum and Visitors Center Hours:

Monday thru Saturday 9am to 5pm,
Tuesdays until 8 pm

Admission:

FREE - Children and Students with ID
\$5 - Adults \$4 - Age 65+

Museum Staff

Julie Emig - Executive Director
Susan Hartzold - Curator of Exhibits
Jackie Cain - Curator of Collections
Candace Summers - Senior Director of Education
Maria Mears - Director of Adult Education
Emily McCusker - Director of Youth & Family Education
Norris Porter - Director of Development
Brandy Maloney - Development Assistant
Bill Kemp - Librarian
George Perkins - Archivist
Micaela Harris - Director of Communications
Jeff Woodard - Marketing & Public Relations
Torii Moré - Curator of Digital Humanities
Jamie Arthur - Visitors Center Manager
Kathi Davis - Visitors Center Assistant
Eric Hanson - Director of Volunteers
Morgan Bueza - Registrar

Museum Board

OFFICERS

Tom Eder - President
Carolyn Perry Yockey - 1st Vice President
Michelle Pazar - 2nd Vice President
John Killian - Treasurer
Robert Porter - Secretary

DIRECTORS

Craig Alexander
Keith Camille
Zach Dietmeier
Larry Dietz
Bob Dobski
Russel Francois
Vasudha Gadhiraaju
Arlene Hosea
Mike Matejka
R.C. McBride
John McIntyre
Marcos Mendez
Pamela Muirhead
S. Georgia Nugent
Shelli Opsal
Allison Petty
Karen Schmidt
Ann Sullivan
Carl Teichman
Paul B. Van Ness
Robert Watkins
Bill Wetzel



Cover image: ISSCS students explore a 1949 mini fair of garden and craft projects, including a cabbage hula girl, cucumber strong man, potato snake, carrot starfish, and a cucumber swan—all made from vegetables they've grown themselves.

Announcements

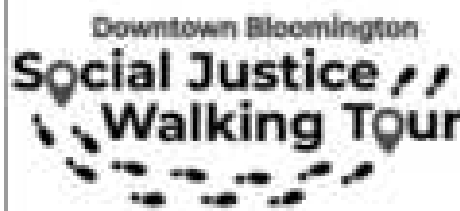
MARK YOUR CALENDARS NOW!

2023 Evergreen Cemetery Walk
advance ticket sales begin September 5

\$20 - general public
\$18 - Museum members
\$8 - children and students w/ID

Public performances at 11 am and 2 pm on September 30, October 1, 7, & 8

NOW LIVE!



Learn how the local community
responded to challenges in the past.

go to

blono-social-justice-tour.org

The ***Social Justice Walking Tour*** explores how Bloomington residents dealt with issues of human rights in the 1800s and 1900s. The website features 15 sites in and around downtown Bloomington and is organized by topic and place. The color-coded map guides users through local history using historical and contemporary photographs and information from the Museum's collections.

Individuals and groups can reference this resource from anywhere or do a self-guided walk on their own!



Scan this QR code to access the website!

Historic Marker Updates

The Historic Marker Project has received current cash gifts totaling \$74,678, not including in-kind gifts of labor and materials. The Grand Village of the Kickapoo marker was received in April, and we are coordinating the installation at West Park east of LeRoy. The Booker T. Washington Home marker is in production and we are finalizing the Simon Malone Home marker and the Briarwood Subdivision Civil War marker. The Museum will announce dedication ceremonies as these projects are completed later this spring and summer.

Welcome New Members

We look forward to seeing you soon!

Jeffrey and Amy Deaver
Shannon Fulton and David Brown
Vasudha Gadhiraaju
Tom and Mary Haynes
Michela Laible
Sonya Mau
Stephen McKenrick

Ray McKoski
Beth Mears
Julie and Jeff Payne
Anthony Saluto
Karen Stephens
William Wasson
Cynthia Williams

Museum membership is an act of philanthropy that supports local history, preservation, and education for the entire community. Each membership also offers direct benefits to you and your family with free admission to the Museum and Library / Archives, discounts in the gift shop, member pricing for event tickets, and our *Time Travelers* reciprocal membership that offers free and discounted admission to hundreds of sites across the U.S.

Community Pride



When Northwestern Professor of History, Dr. Amy Stanley, gave her Bone Lecture at Illinois State University this spring, she challenged the notion that microhistory and global history were opposing approaches to how historians make sense of the past. Rather, individual stories can inform how to understand global movements, and an understanding of the larger context can inform how to interpret a “regular” person’s day-to-day experience. Stories that may have been left out of the official record rise to prominence.

This season at the McLean County Museum of History we are busily preparing for the annual **History Makers Gala**, which features stories of those who have had an impact on the formation of our community. Attendees of this event should look for common themes that illuminate universal trends while staying close to unique and personal experience.

As we close in on Pride Month, we are proud to curate and display the flag collection annually loaned by resident Bruce Lang. This display represents both the challenges and achievements associated with LGBTQIA+ rights while simultaneously drawing attention to Lang’s local advocacy. Indeed, many local stories related to civil rights history can be accessed via the Museum’s virtual exhibits at mchistory.org or, thanks to an *Under Our Wing* grant from Business Builders, who created the Museum’s new virtual *Social Justice Walking Tour* website that can be viewed at blono-social-justice-tour.org.

Stanley (2016) writes, “...global history is not only the possession of the sovereign at his court, the mariner at his star charts, the scientist at his study, and the merchant at his accounts. It also belongs to the maidservant at the city well, singing a tune from the countryside, calculating the value of the clothes on her back, and planning her next move.”

— Julie Emig, Executive Director

Civic Season: A New Initiative

The Museum is thrilled to participate in Civic Season, a new national initiative created through the organization Made By Us, a group of museums focused on engaging with audiences ranging from age 18 to 30. Civic Season aims to use the time between Juneteenth (June 19) and July 4 as a period of national conversation on civic engagement and American history.

The proximity of Juneteenth to July 4 is significant. July 4 is a time to think about the promises of freedom and democracy that were made in 1776, while Juneteenth is a reminder that the fulfillment of these promises was not, and in some cases remains, out of reach. Civic Season is a time for reflection on the past, but also an opportunity for museums and cultural centers across the country to engage in active change and foster critical dialogue.

The Museum’s virtual *Social Justice Walking Tour* will be featured on the Civic Season’s website for 2023. Museum staff are excited to be able to be part of such an ambitious and collaborative national project. We hope people from across the county will be able to engage with our tour and learn about McLean County’s fascinating and important role in social justice. Civic Season is sponsored through funding from sources such as the National Endowment for the Humanities and the Mellon Foundation and participants include the Smithsonian and the Atlanta History Center. To learn more about Civic Season visit thecivicseason.com

**CIVIC
SEASON**

A new tradition - made by us

2023 History Makers Gala

On Wednesday, June 21 we will gather to celebrate the legacies of our 2023 class of History Makers (Mary & Hank Campbell, Guy Fraker, Willie and Charles Halbert, and Dotti Bushnell). Each year the History Makers Gala recognizes long-standing residents whose outstanding, lifelong contributions of time and talents have helped make McLean County a better place to live. The Gala dinner will feature live entertainment that celebrates the honorees and their service to the community through a performance entitled "Community of Us."

Our 2023 Honorees

Hank and Mary Campbell

Habitat houses, formerly incarcerated women, student discards reused, food distributed, children sheltered, and a Kenyan clinic sustained are all contributions Hank and Mary Campbell have made and continue to support. These two retired Illinois State University (ISU) professors (Hank taught Industrial Technology and Mary taught in the Social Work Department) have never understood the retirement concept. They continue to launch new projects to enrich not just Bloomington-Normal, but the world. Shortly after their 1976 arrival in Bloomington-Normal, their open and generous hearts plunged them into multiple activities.

One of Mary's classes initiated "Pass It On," gathering discarded furniture, food, and clothing when students left campus, which still exists today. She took her students, and Hank, on work trips to rural Kentucky and flood reconstruction after Katrina. She has served on multiple community boards, including ABC Counseling Services, the YWCA and just elected as a Trustee to Heartland Community College. In her retirement she joined with Feli Sebastian to launch Labyrinth Outreach Services to Women, which serves formerly incarcerated women, and Dreams Are Possible, uplifting women through enhanced job skills. She is a Master Naturalist and volunteers with Center for Hope food pantry, Youth Global Citizens, and the Multicultural Leadership Program.

Hank helped initiate the local ISU-IWU Habitat for Humanity, resulting in 25 homes being built. His construction skills helped open Claire House and Neville House. He is very active with the Normal Rotary, having traveled to other countries to support Rotary projects. He and Mary both support multiple ISU and HCC scholarships, including an endowed Technology Department scholarship. Hank's board and committee service includes the ISU Credit Union, Oakdale School Promise Council, Illinois Prairie Community Foundation, the M.J. Rymer Family Nature Preserve, Heartland Community College foundation, and the Lamu, Kenya effort, which



Hank and Mary Campbell

funds a medical clinic. Besides ISU, he participated in faculty exchanges with Australia, Russia, and China, and served as a Dean at the University of Arkansas in Pine Bluff, an Historically Black University.

This is only a cursory list touching on their community generosity which also encompasses their home— they have two biological children, two adopted from Korea, and served as foster parents.

They embrace any challenge with vision and build effective community partnerships. Their community and state recognitions would fill another page, not to mention other involvements and donations.

Guy Fraker

Missouri-born and New York raised, Guy Fraker's family had Illinois roots. While visiting his grandmother and sister they made a trip to Springfield where the impressionable grade schooler saw the Lincoln sites. Guy was soon spending his spare change on Lincoln books. After completing high school in White Plains, he returned to Illinois to attend his parents' alma mater, the University of

History Makers — continued on page 5

History Makers — continued

Illinois, majoring in history and then completing law school. After his graduation in 1962, he was recruited by the Costigan and Wollrab law firm in Bloomington. As a lawyer Guy volunteered his time to draw up the documents needed to establish the ParkLands Foundation, which now preserves and maintains more than 3,600 acres along the Mackinaw River. He served on their Board for many years, including several terms as President. Governor Jim Edgar appointed Guy to a statewide task force to study natural land preservation issues and make recommendations. The group's feedback resulted in the purchase of over 16,000 acres to create the Panther Creek Conservation area in west central Illinois. Fraker joined the the Nature Conservancy, served as Chairman of the Board and as Director of Land Protection. In that capacity he negotiated more than 20 acquisitions, totaling more than 10,000 acres across the state. At the same time his interest in Lincoln continued. He joined the Abraham Lincoln Heritage Area's Looking for Lincoln Heritage Coalition and helped develop the *Looking for Lincoln* markers and promote the Lincoln story across the state.

With little written about Lincoln's formative years on the Eighth Judicial Circuit, Guy delved deep into that history and in 2012 published *Lincoln's Ladder to the Presidency: The Eighth Judicial Circuit*. Five years later he followed it with *Looking for Lincoln in Illinois: A Guide to Lincoln's Eighth Judicial Circuit*. He has otherwise written extensively and spoken around the country about Lincoln in Central Illinois. These were the cornerstones for the WILL-TV PBS show, *Lincoln: Prelude to the Presidency*, which has been carried by PBS stations nationwide. For Bloomington's David Davis Mansion, he co-curated an exhibit, *Prologue*



Guy Fraker

to the Presidency: *Abraham Lincoln on the Illinois Eighth Judicial Circuit*. His research and guidance was important to the Museum's *Abraham Lincoln in McLean County* permanent exhibit. He served on the board of the McLean County Historical Society for over nine years.

Charles and Willie Halbert



Charles and Willie Halbert

Standing for justice and deep in their faith, Charles and Willie Halbert are community stalwarts to ensure fairness and equality for all. Their generosity has fed multitudes, comforted the imprisoned, and housed the homeless.

The two grew up in Phoenix, Illinois, an unincorporated area near Harvey, but did not know each other until they came to ISU and met when working at Heritage Manor. Financially unable to complete his education, Charles returned home, was drafted into the U.S. Army, and served at Fort Riley, Kansas. With the G.I. Bill he returned to ISU in 1974, completing an economics degree and then began a lifetime career at State Farm, which included a brief stint in Texas, rising to a superintendent in health insurance.

Willie has a dynamic and creative streak, first coming to ISU as a drama student. That ended when a play required her to kiss another actor. She opened the ISU directory and decided she would major in whatever page it opened to. After earning a degree in Criminal Justice, she joined the Illinois Department of Corrections. Willie worked as a counselor, helping prisoners through challenges and lining up educational opportunities and post-incarceration employment. She retired as an assistant superintendent.

The two have

History Makers — continued on page 7

History Makers — continued

always stood for justice—participating in marches, demonstrations, and dialogues on human relations. Both helped to establish a Bloomington-Normal Not In Our Town. Early in his State Farm career Charles joined a downtown march. Aware of the risks, Charles went directly to CEO Ed Rust Jr. and shared his intentions to stand up for his beliefs. There was no retribution for his participation.

Charles served multiple terms on Bloomington's Police and Fire Commission and Willie on the Human Relations Commission, including during the 1995-96 failed ordinance attempt to ensure equal rights for LGBTQ+ people. She received hate mail but stood by her equal treatment for all principles. Willie is a "visionary," according to Charles, seeing ahead where others cannot. She was the first African American to lead the BroMenn Follies, agreeing to it only if she could have total artistic control and diversify the talent. She has written three books and multiple dramas.

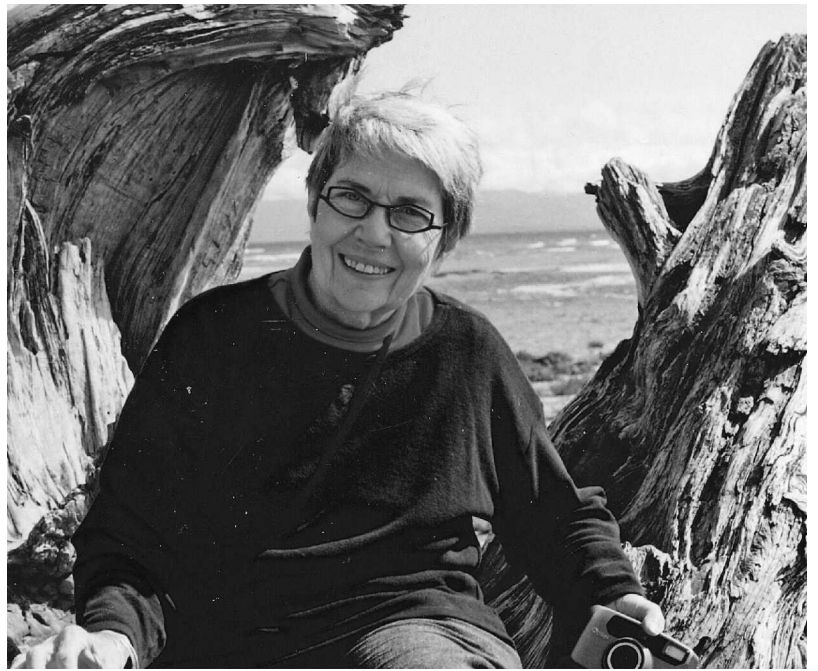
Mount Pisgah is their spiritual home and they are both deeply involved in the church. Charles is a deacon and Willie teaches Sunday School. They both assist with the food pantry and during COVID-19 Willie supervised mask making for community distribution. They have opened their home to those needing shelter and cooked meals to share. Both guide, listen to, and encourage youth to live and realize their fullest potential.

Willie is currently the Bloomington-Normal NAACP Branch Second Vice-President and is a Zeta Phi Beta sorority member. Charles is also an NAACP member and past Veterans' Committee chair.

Dottie Bushnell

The rich aroma of spices has followed Dotti Bushnell throughout her life, from her childhood in India to her 47-plus year proprietorship of The Garlic Press in Uptown Normal. Dotti's parents were Presbyterian missionaries in India, where she grew up surrounded by Indian culture and attended the Woodstock School with students from over 20 countries.

She returned stateside to attend The College of Wooster in Ohio, where she majored in art and met her husband Paul. In addition to the full-time effort of raising four children, Dotti also taught Montessori school, worked as the Mennonite School of Nursing's librarian, and was an elementary education coordinator at the First Presbyterian Church. In 1976 she purchased the Garlic Press with the assistance of various family members. The business grew and a few years later Dotti moved to a new location just up the street where the business resides today. She started a quarterly newsletter for customers



Dotti Bushnell

cooking classes, store news, and events in Normal. Customers enjoyed the classes, which in turn made the business grow. She later added more space to the business for classes, which became a social experience for customers.

The Garlic Press has always been more than kitchen equipment, including gifts of all sorts, greeting cards, toys, clothing & jewelry, and unique items... "It starts with the kitchen, but we have customers who don't cook at all," Dotti told the Pantagraph in 1996. "I think the assortment makes us unique... Good design and function is what we look for." In 2001 she expanded ownership to include her daughter Sarah McManus and long-time employee Pam Locsin.

History Maker Gala Registration Deadline: Friday, June 9

Scan this QR code
or go to bit.ly/hmgala23
to purchase tickets.



Special Note: Memory books will be available for sharing remembrances or stories with honorees during the event. If you are unable to join us in person, mail your written memory to the McLean County Museum of History, c/o Development, at 200 N. Main Street, Bloomington, IL 61701 or email development@mchistory.org

ISU's Quad: Gateway to the Wider World

Join us on Saturday, July 15 from 11 am to 1 pm for a fascinating and historically enriching stroll through Illinois State University's Quad! You'll hear how one of the more picturesque spots in Central Illinois speaks to the surrounding community and beyond.

This walking tour will kick off at the Normal Theater and will be led by Museum Librarian Bill Kemp and ISU Milner Library Government Documents Librarian Angela Bonnell. Following a brief presentation, the walk will highlight a range of topics, including the lost natural environment; the removal of Indigenous peoples; the role steam power and railroads played in the transformation of the landscape; 19th century Black Normal; the rise of women's athletics; lost neighborhoods; picketing a racially segregated business; protesting the Vietnam War; and much, much more!

This program is open to individuals who are 18 years of age or older. The cost per person is \$17 for Museum

members, \$20 for the general public. The program will include boxed lunches (vegetarian option available) and bottled water. Join us for a healthy stroll while learning ISU history.

Parking will be available in any parking garage in Uptown Normal. Visit normalil.gov/1653/Parking for additional parking details. The tour is limited to 30 people. Registration is due by July 7 at 5:00 p.m. To register call the Museum at 309-827-0428, email the education department at education@mchistory.org, go to bit.ly/ISUQuad23, or visit our visitors center. Payment is required at time of registration.



View of the Normal University campus and Town of Normal circa 1866

Meet our New Director of Volunteers

The Museum recently welcomed new Director of Volunteers Eric Hansen, who is super excited to join the team. He likes to refer to himself as a townie-adjacent as he grew up across the county line in Minier and attended Olympia schools in McLean County. He now lives in Bloomington with his fiancé Cody and their two dogs and two cats.

Eric studied political science at Illinois State University, graduating in 2016 and this August will be starting online classes for a Master of Public Administration with a nonprofit focus through the University of Illinois Springfield. To date his career has been centered on working with volunteers. He was most recently the volunteer recruiter and trainer for McLean County Court Appointed Special Advocates (CASA).

When asked why he applied for the Museum's Director of Volunteers position Eric responded, "I knew I had to apply. Volunteers are my favorite people to work with because they are the epitome of generosity and have such a genuine love of contributing to their community with no expectation of anything in return, other than the joy of giving back. And what better institution to work with volunteers than this amazing museum that is the heart of our community."

With COVID-19's impact on volunteer programs, Eric knows he has challenges ahead. "Right now the biggest challenge is volunteer recruitment. I want to make sure we have enough volunteers to staff the Visitors' Center and Library respectively so that we're not asking for too much from our current volunteers and allow them the time and space to enjoy the museum and to work on special projects that excite them! I want to ensure that our volunteers know just how much we appreciate and value their time and contributions."

When asked about his hobbies, Eric joked that they all revolve around food. He loves to grow cucumbers, garlic, tomatoes, pumpkins, and popcorn. And he cooks too! "My partner will tell everyone that I love to pick detailed, time heavy recipes, but he gets some pretty good authentic style ramen or birria tacos, so I don't think he's too upset about the wait. I also love going out to eat and trying new things, especially cultural cuisines that are new to me. I firmly believe we can learn so much about people that are different than us by sitting down at the table and sharing a plate of food with them!"

The next time you are in the Museum, be sure to poke your head into the volunteer office and say hello to Eric!



New to Collections—continued from page 10

the Historic American Buildings Survey (HABS), 1930s and later, from the work of donor's father, Bloomington architect Edgar Lundeen Sr.; donated by Ed Lundeen Jr.

- Unidentified Union Army private, Civil War, circa 1864, cased ferrotype; donated by Kim C. Ready

- First Methodist Church, Bloomington, choir, undated, and Halloween Party, First Methodist Church group (donor's grandparents, Bessie Leesman Schalk and Walter Schalk are identified); donated by Sara Kellum

- Collection of Bloomington photographs, six photos showing downtown Bloomington scenes and buildings, early twentieth century; donated by Illinois Wesleyan University, Ames Library, Tate Archives

- Large framed composite / montage of Beich Company history and employees, circa late 1960s, once displayed at Bloomington plant; donated by Carol Sharp

- Bloomington Builders Supply truck fleet, circa 1957, and Irvin Bottlers truck fleet, circa 1963 (both featuring GMC dealer McLean County Truck Co. vehicles); donated by Marlon McClure

- Collection of photos from the late Carol Sylvester relating to the Illinois

Soldiers' and Sailors' Children's School, including eighth grade graduating class, 1936, and 11 wallet-size photos of ISSCS residents, identified; donated by Heath Sylvester (Carol's son)

- Fourteen photographs of the Irvin Theatre, Bloomington, 1930s, day and nighttime exteriors, taken by United Photo, a Bloomington photo studio; donated by Jackie Rever

**The Museum
collects personal, military,
household, business, art, and
native objects, created and used by
the people of McLean County.**

**What's gathering dust
in your attic?**

Growing Community Partnerships

The Museum's Director of Marketing and Community Relations Jeff Woodard and Director of Adult Education Maria Mears were hard at work in April at the Westside Community Garden to prepare for planting in our Victory Garden. Volunteers from the local community, Master Gardeners, Illinois State University's Stevenson Center, and Youth Build also came out to prepare the space for the upcoming growing season.

Many of the garden plots, including the Museum's, were growing a cover crop all winter long. This helps to keep the soil fertile. Together the group covered what was currently growing with tarps and cardboard. With no light the cover crop will die off, leaving healthy and fertile soil for all of the garden plots! There are also brand new raised beds in several plots, including the Museum's, thanks to the hard work from the Stevenson Center and Youth Build volunteers. Jeff and Maria have several plants started for the Victory Garden, including Napa Cabbage, which will be used in the upcoming Kimchi Making Workshop with the University Extension and scheduled for August 29 at 5:30 pm.

Jeff Woodard mows around one of the garden spaces (right), while members of Youth Build (below) prep raised beds.



New to Collections

Objects

- Fred W. Schroeder cigar jar, c.1930, Stamm's tie and box, c. 1950, C & A RR calipers, c.1920, Denny's Doughnuts and Bakery Inc. key chain, c.1999, I.C.R.R token, c.1900; donated by Richard Savage
- World War II soap container and dog tags used by Lyle Snively, c. 1910; donated by Edgar Lundeen
- Wood fragment from Majors Hall, Bloomington, c.1930, portrait of Abraham Lincoln, c.1911; donated by Guy Fraker
- Shoehorn belonging to Paul Beich c.1890, Otto Beich's insurance wallet printed with Beich Candy Co., c.1950s, Amtrack Toiletry kit c.1990, Bloomington High School button c.1980, souvenir of Bloomington pennants(2), c.1930; donated by David Beich
- ISU-IWU Collegiate Habitat House t-shirt, c.1995, worn and donated by Hank Campbell
- Two art folios "Fugue" created by Ken Kashian with poems by Kathleen Kirk, c.2023; donated by John Elterich

Archives

- Recent Normal Public Library and Illinois State University promotional items; donated by Robert Neuleib
- Darnall Gun Works & Ranges promotional material, 2022-23, including list of upcoming events and pistol class registration form; donated by Torii More
- Items relating to local poet James Hart, including a copy of his 1910 compilation, signed by Hart in December 1956, to Ruth and Shirley Winterroth,

and Hart poem, "For Adlai Stevenson," 1965; donated by Shirley W. Maeker

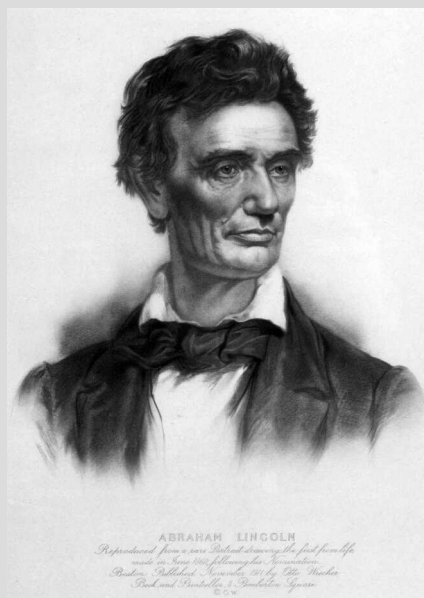
- Poster-size Eighth Judicial Circuit map, 1839-1861, dated 2007, for donor's Southern Illinois University Press book on same; donated by Guy Fraker
- Additions to the Beich Company and Beich Family collections; donated by David Beich
- Billing statement Kelly's Super Service, Gene Kelly, proprietor; two business cards, American Maid Food Shop Inc., authorized Greyhound lunch stop, 1201 S. Main St., Bloomington, Clem Hundman and Gene Kelly, proprietors, and other items; donated by Patricia Pence
- Various items, including Bloomington High School, Class of 1905, theater program; "Class Day" exercises, Illinois State Normal University, June 23, 1891 (includes recitation by Rachel Crothers), and other items; donated by David Parker
- Gulf, Mobile and Ohio Railroad employee time book, R.O. Beier, 1952; and booklet, "Commitment to Service, an Evening Honoring John Penn," January 26, 2023, Illinois State University; donated by Mike Matejka
- Fold-out map of Bloomington-Normal, 1948; and Bloomington Centennial, 1950, program; donated by Jane Randall and son Gregory Randall
- Additions to the John "Jack" Wadell Collection, including invitation and program for "Konzert Das Afro-Amerikanische Neger-Spiritual," 1968, and other items; donated by John "Jack" Waddell
- Nine-page typed reminiscence by donor, "Recollections of Bloomington's Dean Tower," February

2023; donated by Stan Geison

- Papers relating to, Dr. William Frinsko, including voter registration materials, 1970-71; Democratic Party publications, late 1960s / early 1970s; and items relating to Carl Vrooman, including several Vrooman letters, 1919; donated by Mike Frinsko
- Rape Crisis Center of McLean County training manual, 1978; and League of Women Voters of Illinois study on mental illness policy, 1986; donated by Judy Poultney
- Program booklet, Sweet Adelines, "Showcase of Harmony," at Bloomington High School, 1958; donated by Karin McReynolds Buhle
- Additions to the American Passion Play Collection, including a scene change script, 2019; and rehearsal schedules, various seasons, 1992 to 2023; donated by David A. Hall
- State Farm anniversary party booklets, 1980s and 1990s; donated by Carolyn Guilford
- Papers relating to the Stern family and Stern Furniture Co., including Harry Stern schoolwork, 1912, Edwards School, Bloomington; and Sam Stern correspondence, notes, and other items, 1917-1925; donated by Sybil Mervis
- Large collection of State Farm Holiday Classic high school basketball tournament programs, posters, and passes, 1996-2022; donated by Classic Tournament Inc. / State Farm Holiday Classic
- Items once held by Myrtle McDaniel Stibravy, including program for Illinois State Normal University alumni dinner, 1911, and other items; donated by John Stibravy
- Fifteen typed sermons by the Rev. Harold R. Martin, Second Presbyterian Church, Bloomington, 1963; and McCall's magazine, February 1950, featuring an article on the Rev. Martin and Second Presbyterian Church; donated by Second Presbyterian Church
- Additions to the As You Like It Club Collection, including member booklets 2010-11 to 2021-22; memory book; account ledger 1964-2022; three scrapbooks covering 2015 through 2022, and more; donated by the As You Like It Club (organized in 1914, the Bloomington-Normal-based club held its final meeting in September 2022)
- Genealogies of Black families of Normal, 74-page manuscript by Reginald "Reggie" Whittaker; donated by William "Bill" R. Detmers
- Various posters of local events, including Halloween at Clover Lawn, 2001, and Hot August Nights: A Taste of Downtown Bloomington, 2007; donated by John Elterich
- Front page of "Ballou's Pictorial," September 15, 1856, featuring article on Illinois; donated by Steve Gossard
- Steak 'n Shake foldout pocket menu, undated; donated by Gordon Fidler
- Collection of agriculture publications and book-

Featured Artifact

Printed portrait of Lincoln — Donated by Guy Fraker



Local Abraham Lincoln historian, Guy Fraker, acquired this portrait during his research into the Prairie State's most famous attorney. Fraker has written several books on Lincoln's history, including *Lincoln's Ladder to the Presidency: The Eighth Judicial Circuit and Looking for Lincoln in Illinois: A guide to Lincoln's Eighth Judicial Circuit*.

Published by Otto Wiecker in 1911, the lithograph is based on a rare drawing created by Charles Alfred Barry in June 1860—shortly after Lincoln's nomination by the Republican Party. It was the first time Lincoln sat for any likeness of himself other than a photograph. Few copies of the lithograph were made and even fewer survived, due to damage to the litho stone used to print the portrait.

Featured Photo

American Maid business card, circa 1940 — Donated by Patrician Pence



During the past several years, Pence has made a series of donations relating to her parents, Gene F. and Loretta Kelly. Her latest gift included two of her father's business cards.

At that time, Gene and his father-in-law Clem Hundman ran the American Maid food shop out of the Greyhound Bus station, then located at 1201 S. Main St. in Normal (the old station is occupied today by Etcheson Spa & Pool). A June 1940 advertisement read *"American Maid bar-b-que with coleslaw, a meal in itself, 15 cents."* Kelly later worked at West Side Coal and Lumber Co. and then as an inspector for Eureka-Williams Co. He passed away in 1997.

lets, mostly 1940s, relating to hog and sheep farming and other topics, collected by Alvin Poppe; donated by Gerald and Ruth Poppe

- Five LPs—recordings of local civil defense training sessions for graduate nurses, held at Bloomington-Normal hospitals April 2 and April 23, 1952; donated by Illinois Wesleyan University, Ames Library, Tate Archives

- Three Amtrak schedules 1990-91 and 1991; donated by Eamon A. Rago

- Blueprints and "spec" books" for the McKnight & McKnight Co. building on IAA Drive; donated by Michael Dolan

- Seven Illinois Soldiers' and Sailors' Children's School Historical Preservation Society newsletters, 2003 to 2009, collected by the late Carol Sylvester, a Twin City resident who played a role in commemorating and preserving ISSCS history; by Health Sylvester

- Illini Storytellers' Guild scrapbooks, 1981-1987, including photos, guild newsletters, event flyers, and other items; donated by Normal Public Library

- Several World War II-era publications, including Stars and Stripes magazine, Paris edition, August 14, 1945 and two Pantagraph subscription payment stubs, September 1945; donated by the Humane Society of Central Illinois

- Checks, blank, and check receipts, 1953-1954, for The Pastry Shop, Bloomington, Corn Belt Bank account; donated by Rick Hallberg

- Various items, including Illinois State Normal University commencement program, June 13, 1949; Normal Community High School music and drama programs, 1973-1976; and a United 5 Humanities Handbook, undated; donated by Catharine Knight

Books / Periodicals / Publications

- The Great Locomotive Works: A Description of Locomotives Manufactured by the Great Locomotive Works of Patterson, N.J. (1871), book once

held by John Adams Jackman, who retired in 1879 as master mechanic of the Chicago & Alton Railroad Shops (donor-is great-great-great grandson of Jackman); donated by K. Zachary Abbott

- State Farm: Good Neighbor Photo Collection, 1993 (containing photos that could be ordered for agents' offices); donated by Carolyn Guilford

- Twentieth year reunion booklet, class of 1977, Normal Community High School, July 1997; donated by Catharine Knight

- McLean County Combined Indexed Atlases, 1856-1914, published by the Museum in 2006, with cloth slipcase; and booklet, Bloomington Cemetery Association, 1904; donated by Lars LaBounty on behalf of William P. LaBounty (a long-time Museum volunteer, Bill was the editor of the massive 2006 combined atlas project).

- History of the Cumberland Presbyterian Church in Illinois by J.B. Logan (2018 reprint), and The Middle Mind: Why Americans Don't Think for Themselves by Curtis White (2003); donated by Greg Koos

- Three Christian Church (Disciples of Christ) hymnals, 1953, 1970, and 1995), and song book supplement (1998) compiled by First Christian Church, Bloomington; donated by Herb Knudsen, retired Christian Church minister

- Welsh song book / psalmody belonging to Welsh immigrant Howell W. Rowlands, who settled in rural Lexington after the Civil War; donated by Gretchen Clemmons

Photographs

- Thirty color photographs of the Unity Building fire, July 3, 1988, taken by donor; and five picture postcards of Bloomington scenes and buildings, associated with Lottie Boundy; donated by David Wilson

- Thirty-two Ektachrome transparency color slides of Hubert H. Humphrey's visit to Bloomington, April 1969, as speaker for the fifth annual Adlai E. Ste-

venson Memorial Lecture Series; and approximately 80 color photos of opening ceremonies of Diamond-Star Motors Corp. plant in Normal, November 10, 1988; donated by Robert E. Handley

- Twelve black-and-white views of downtown Bloomington, undated, likely taken by W.B. Stoutamoyer of Park, Stoutamoyer and Associates; seven views of the Great Bloomington Fire, June 19, 1900, by Freese & Wright, Eureka, IL, and others; donated by David Park

- Large collection of color slides and photos relating to the Outlaw family and their activities, mostly 1950 through 1970s, including five slides of "soil day" event at Stanford, 1954, and five slides of Miller Park, Bloomington, 1967; donated by Jan Outlaw

- Four black-and-white photos of downtown Bloomington, undated; and six color slides, July 1948, also of downtown Bloomington—photos once held by donor's parents, Richard "Dick" and Mimi Livingston; donated by Richard S. Livingston

- Washington School, ninth grade class photo, 1958-59; donated by Daniel G. Deneen

- Two photos of 2014 excavation of south entrance to Museum—Second Courthouse archaeological project led by Ed Jelks and Christopher Stratton; donated by Guy Fraker

- Large-format photo of William August Beich and Paul Marion Beich, 1965, taken at home of William and Patty Beich, and other additions to the Beich Family Collection of photos; donated by David Beich

- Collection of Kelly family photographs; donated by Patricia Pence

- Picture postcard, Howard Johnson's, Bloomington, undated; donated by David Parker

- Normal CornBeltsers baseball team photo, 2010 (inaugural season); donated by Rick Arnhalt

- Large collection of photographs, many relating to

New to Collections—continued on page 8

Specific Skills & a Unique Volunteer Opportunity

The pandemic brought about many changes for all of us, but for Kevin Eatinger it inspired a change of scenery and volunteer work at the Museum. Kevin and his wife moved to Bloomington from Chicago two years ago and were looking to become involved within the community while staying safe during the COVID-19 epidemic.

Kevin has been a photographer for most of his life. A familial interest in the subject inspired a career in graphic design and photography. Before the pandemic, Kevin worked with the Chicago Academy of Science taking photos of objects they housed and enjoyed working outside of his usual parameters. A year after moving, Kevin volunteered for the Cogs and Corsets Festival, held in Downtown Bloomington, and on a whim stepped into the Museum's Visitor Center. After asking a few questions, he was informed that the Museum had similar needs to the Academy. Kevin jumped at this opportunity and in the past seven months has volunteered 330+ hours and photographed over 1000 artifacts. These photos are entered into the collection database, which



Kevin Eatinger assists in the collection area photographing objects.

holds all the data associated with each object in the collection. This information can be accessed by Museum staff and, once the collections goes online, students and researchers from around the world.

When asked why he volunteers, Kevin cited the opportunity to be involved within his community, the ability to utilize a well-developed skillset, and the chance to interact with interesting objects. Kevin's favorite objects include military medals from the Spanish American War to the Vietnam War, Army uniforms, and ribbons notating rank. To Kevin, these objects bring the people they belonged to back to life.

The Museum is exceptionally grateful for Kevin and his eagerness to do this very important preservation work and assistance in providing greater access to the Museum's resources. Thank you, Kevin!

Volunteers Needed!

Interested in helping the Museum achieve its mission to preserve, educate, and share the diverse history of the people of McLean County? We are currently seeking tour guides for this fall's Cemetery Walk, as well as library desk, visitors' center, and exhibit research volunteers. If interested, call Director of Volunteers Eric Hansen at 309-827-0428 or email volunteers@mchistory.org



Scan this QR code to sign up online!

Bad Advice

Every year the IRS publishes a “dirty dozen” tax scams that taxpayers should avoid. A new one was added this year: Getting tax advice from social media. The Service reported on two specific bad suggestions that have been observed circulating on social media, and warns that either of them could lead to tax penalties.

Form 8944 fraud. One bad idea is to file Form 8944, Preparer e-File Hardship Waiver Request. For those unfamiliar with tax terminology, that might sound like a chance to get tax liabilities reduced. That is not what the form is about. It is for professional tax preparers, not taxpayers, and concerns filing on paper instead of electronically. The form has no effect at all on anyone’s tax obligations, contrary to statements found on social media.

W-2 fraud. This scheme involves filing a manual W-2 with large income and withholding figures, then filing an electronic return hoping for a substantial refund. The theory seems to be that the IRS will process the e-return quickly, and by the time the manual W-2 is processed the check will already have been sent. That is a weakness in the IRS administrative process, but because the Service is aware of the issue agents will be on the lookout for it.

Given the extreme complexity of the tax system, it is understandable that taxpayers could become confused and look to free sources of advice, such as social media. It’s possible that an innocent taxpayer could fall for the Form 8944 fraud. On the other hand, it should be obvious to anyone that filing a false W-2 is a tax crime, no one should claim to have been misled on that one.

For better tax advice, the IRS recommended that taxpayers consult tax professionals, tax preparation software, or the IRS itself. The IRS social media links may be found at <https://www.irs.gov/newsroom/irs-social-media>.

The information contained within this article is provided for informational purposes only and is current as of the date published. Please consult with your tax and legal advisors before implementing any strategies. This information is not intended to be and should not be treated as legal advice or tax advice. Readers should under no circumstances rely upon this information as a substitute for their own research or for obtaining specific legal or tax advice from their own counsel. April 2023 © 2023 M.A. Co. All rights reserved.



Organize your financial life

Life has a way of changing your long-term goals. Now is the time to review and update your financial plan.

Wealth Management
hbtbank.com | 855-244-1217



Heartland

Bank

and Trust Company

Securities and insurance products are NOT deposits of Heartland Bank, are NOT FDIC insured, are NOT guaranteed by or obligations of the bank, and are subject to potential fluctuation in return and possible loss of principal.

If not now,
when?

CALENDAR OF EVENTS*

Every Saturday through October 28

The Museum opens at 8:30 am to all visitors, with free admission until noon! Tour the Museum's latest exhibits and shop local goods at the surrounding Farmer's Market.

June 1 5:30 pm

Social Justice Walking Tour

To celebrate the launch of the Social Justice Walking Tour website, (see page 2) the Museum is offering a guided tour with Librarian Bill Kemp and local activist Mike Matejka. Advanced registration is required and is limited to 25 registrants. To register, please visit: forms.gle/3R1n63oVVAadhMu1c8

June 1 through June 30

Pride Flag Display

Stop by the Museum to see this impressive and beautiful display of flags in the Museum rotunda in honor of Pride Month and to celebrate LGBTQIA+ identity and history. Special thanks to Bruce Lang for the loan of this collection!

June 2 from 12-2 pm

Pride at the Park

The Museum and Bloomington Public Library have partnered for this free, family friendly event at the Franklin Park Bookmobile Stop. Celebrate National Pride Month and the LGBTQ+ community by stopping by for a variety of crafts for teens and children, a story time, and more! Members of the local PFLAG chapter and Prairie Pride Coalition will be on hand to provide support and information. Visit bloomingtonlibrary.org to learn more.

June 12-16 and July 10-14

Futures in History Camp Session I

This unique 5-day camp experience includes facilitation by Museum staff and other experts, all materials needed for hands-on learning, meals and snacks, friendship, fun, and more! FiHC is presented in partnership with the David Davis Mansion, the Bloomington-Normal Trades and Labor Assembly, Rivian, City of Bloomington, and many other community collaborators.

June 21 at 5:30 pm

11th annual History Makers Gala

Join the Museum to celebrate six individuals who have dedicated their lives to making McLean County a better

place to live. The Gala will be held in-person in the Brown Ballroom at Illinois State University. To purchase tickets, visit bit.ly/hmgala23. See page 4 for more information.

June 28 at 6 pm

Crafting History - Dyeing with Dinner Scraps

Join Director of Adult Education Maria Mears and Curator of Collections Jackie Cain for a virtual program on how to use natural plant materials to dye fabric. Kits (\$5 for members and \$7 for non-members) will be available for pick up in the Visitor's Center starting June 19. Visit mchistory.org for registration information.

July 15 from 9 am to 3 pm

Davis Mansion Garden Fair

Visit the Museum's Community Garden program series table at the Davis Mansion's Garden Fair. Hosted in conjunction with the Mansion's annual Glorious Garden tour, the fair will feature booths offering a variety of garden-themed activities by community partners.

July 15 from 11 am to 1pm

The Quad: Gateway to the Wider World walking tour

Join the Museum for a fascinating and historically enriching stroll through Illinois State University's Quad! Limited to 30 people, participants of the tour must be 18 years old or older. See page 6 for more information and how to purchase tickets.

July 28-30 beginning at 5 pm

Light up the Museum Square

Head down to the Museum Square to check out our Pride Fest lighting display, starting at dusk on Friday, July 28.

July 29 at 4 pm

Pride Fest 2023

Join us downtown for this annual, family friendly event that includes live music, drinks, food, vendors, and much more! Stop by the Museum's booth on Jefferson Street to pick up a Pride Fest button, make your own PRIDE Flag, and learn more information about the Museum's efforts to collect LGBTQ+ history.

August 5 from 10 am to 1 pm

Knit In at The Hangar Art Co.

Head over to the Hangar Art Co for the next Knit In!

All programs will be presented in the Museum's Governor Fifer Courtroom on the second floor unless otherwise noted.

This quarter we will be making hats and scarves for *Back to School*. For more information or questions, contact the Education Department at csummers@mchistory.org

August 17

Museum Closed for Staff Development Day

August 29 at 5:30 pm

Kimchi Workshop

Using produce grown in the Museum's very own Victory Garden at the West Side Community Garden in partnership with the University of Illinois Extension, earn how to make Kimchi, a traditional Korean side dish made of fermented cabbage. Participants will go home with their own jar of Kimchi ready to be fermented. Check our website for details on registration and fee coming soon.

September 4

Museum Closed for Labor Day Holiday

**VISIT [MCHISTORY.ORG/EVENTS](https://mchistory.org/events)
FOR ADDITIONAL INFORMATION ON
ALL UPCOMING PROGRAMS & EVENTS**

August 1 at 7 pm

***Wreck of the Columbia*
by Ken Zurski**

Held in-person only at
The Junction (303 E. Oakland Ave.) due to
elevator replacement work at the Museum.

Visit bit.ly/history801 to register to
participate in this in-person discussion.

**History Reads
Book Club**



Bloomington Public Library
History Reads Book Club

MUSEUM at the Market

**Join us on the Museum's Plaza
9 am to Noon**

during the June 3 & 17, July 1 & 22, and
August 5 & 19 Farmers Markets

**to purchase all your local history
needs and favorite treats!**

Crafting History – Dyeing with Dinner



The first installment of *Crafting History- Remembering Rag Rugs* was quite a success, drawing 20 participants from McLean County, as well as crafters in Champaign and Cook Counties, and even someone in California. Krystal Lyon, an artist and educator at the McLean County Arts Center, guided participants through this popular but often overlooked art form. Museum Director of Adult Education Maria Mears, presented a history of rag rugs as the workshop began. Users completed a coaster, as making an entire rug takes months or years depending on the size. The crafters were excited to think about the possibilities of continuing their rag rugs and finding a purpose for their worn-out textiles.

Our June 28 installment, *Dyeing with Dinner Scraps*, will explore the use of plant-based materials to create natural dyes for fabrics with our resident expert, Museum Curator of Collections Jackie Cain. Maria and Jackie will take participants through the history of natural dyes and the process of dyeing. Jackie will provide instructions on how to tie their fabric to create beautiful and unique designs, before it is placed inside a jar for dyeing. After the workshop, participants will be encouraged to place their jar outside where the sun will do the rest of the work. The light and heat from the sun will help make the dye vibrant and the designs more distinct.

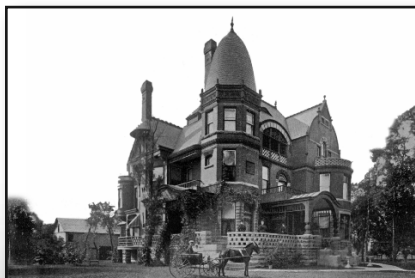
To register for *Crafting History: Dyeing with Dinner Scraps*, go to bit.ly/DyeingWithDinner. Registration is limited to 30 participants. Dye kits include dye, unbleached fabric and a jar for dyeing that can be picked up at the Museum's Visitors Center and are \$5 for members, \$7 for non-members to cover the cost of supplies.



NONPROFIT
US POSTAGE
PAID
BLOOMINGTON IL
PERMIT NO. 118

Mystery History Quiz

After a stretch of difficult mystery photos, we finally made things easier for our many eager history sleuths. There were no less than seventeen of you who correctly identified the opulent J. Thornton and Hannah Snell residence at 1206 N. Main St. in Bloomington. Built at the turn of the last century, it was torn down in 1937 to make way for a Piggly Wiggly. It's U-Haul today. A rollcall of those who correctly identified this lost beauty include Bill Caisley, Jeffrey G. Deaver, Susan Doyle, Roger Elliott, Denny and Jan Faulk, Gary Fillingham, Denise Fries-Romack, Sherry Graehling, Tom Gregg, David A. Hall, Robert E. Handley, Denny Steele, Ruth Stewart, Andy Streenz, Steve Whelan, and Jeanne Wroan. Whew! Museum Librarian Bill Kemp apologizes if he left anyone off the winner's list.



We're hoping this issue's mystery photo will pose a greater challenge! Can you identify this residence? It's got quite a history, that's for sure. If you know the answer—or think you might know—give Bill a call at 309-827-0428. He can also be reached at bkemp@mchistory.org. Good luck!

