

McLean County Museum of History



On the Museum Square

June-July-August 2017

Lincoln's Festival on Route 66

The Museum has participated in the annual festival honoring Abraham Lincoln and his legacy in Bloomington-Normal since its inception in 2009. This year the festival has been expanded to not only celebrate our connection to Lincoln, but to also celebrate the history of Route 66 in our area.

The new *Lincoln's Festival on Route 66* Red, White, and Blue Corridor signature event will be held July 14, 15, and 16 of this year. *Lincoln's Festival on Route 66* will highlight "Trails, Rails, & Roads" with a variety of events.

Activities during the festival weekend will include: living history performances, car shows and cruise-ins for auto enthusiasts, period crafts, children's activities, Civil War skirmishes and cavalry encampment, walking Lincoln tours, a vintage bicycle display, plus speakers and musicians to share the journey along the prairie path, to the steel rails, and on the Mother Road.

The Museum will be hosting a variety of activities on all three days of the festival this year. Free family

friendly activities begin on Friday, July 14 from 5 p.m. to 8 p.m. with *Encounters with Lincoln's Bloomington*, celebrating McLean County's ties to both Lincoln and Route 66 through living history encounters with individuals who lived, worked, and traveled through our landscape in different eras. From Lincoln's day to the present, people have been on the move for various reasons. Hear stories of women and people of color seeking better lives, and discover how local communities changed as the railroad and the highway transformed McLean County. Members of the Historic Acting Troupe will portray men and women whose experiences provide a travelogue spanning generations and miles, highlighting sights, sounds and ideas that echoed throughout the nation.

Performances will be held inside the Museum and several other locations in Downtown Bloomington. The Museum will serve as the starting point, and visitors are urged to arrive no later than 6 p.m. in order to see the entire presentation. Performances will begin every

20 minutes with the last performance at 7:40 p.m.

Museum activities will continue on Saturday, July 15 beginning at 9 a.m. with a self guided "Looking for Lincoln" scavenger hunt that will take visitors to various historic locations around



Bloomington-Normal associated with Abraham Lincoln. This is a great activity for families. Those who bring the completed scavenger hunt back to the Museum will receive a prize! The scavenger hunt will continue on Sunday, July 16 from 10 a.m. until 2 p.m.

(continued on page 5)

With thanks to our newsletter sponsor:



History Makers Gala Tickets on Sale Now!

Thursday, June 15 \$50 members/\$60 public
Purchase at Museum or mchistory.org

On
the Museum
Square

Quarterly Newsletter

June-July-August 2017 Volume 49, Number 2

Produced by Susan Hartzold and Jane Flanders Osborn



McLean County
MUSEUM of HISTORY

and

Cruisin' with Lincoln on 66

Visitors Center



200 N. Main St., Bloomington, IL 61701
Phone 309-827-0428 Fax 309-827-0100
www.mchistory.org

Located on the corner of Main (Rt. 66)
and Washington Streets,
the Visitors Center and Museum entrance
is located on Washington Street on the
south side of the Museum Square

HOURS

9 a.m. - 5 p.m. Monday, Wednesday, Thursday,
Friday, Saturday
9 a.m. - 9 p.m. Tuesday (Free)
10 a.m. - 2 p.m. Sunday (May-September)

OFFICERS

Carolyn Perry Yockey, President
Bill Zimmerman, First Vice President
Brad Briney, Second Vice President
Sandra Harmon, Secretary
John Killian, Treasurer
Craig Alexander, Immediate Past President

DIRECTORS

Larry Dietz	Michael G. Matejka
Tom Eder	John McIntyre
Rob Fazzini	John Meek
Guy Fraker	Pamela Muirhead
Russel Francois	Archana Shekara
Jay Groves	Ann Sullivan
Sally Heffernan	Paul Van Ness
Eric Jensen	Robert Watkins
Susan Laiming	Bill Wetzell
Bob Lenz	

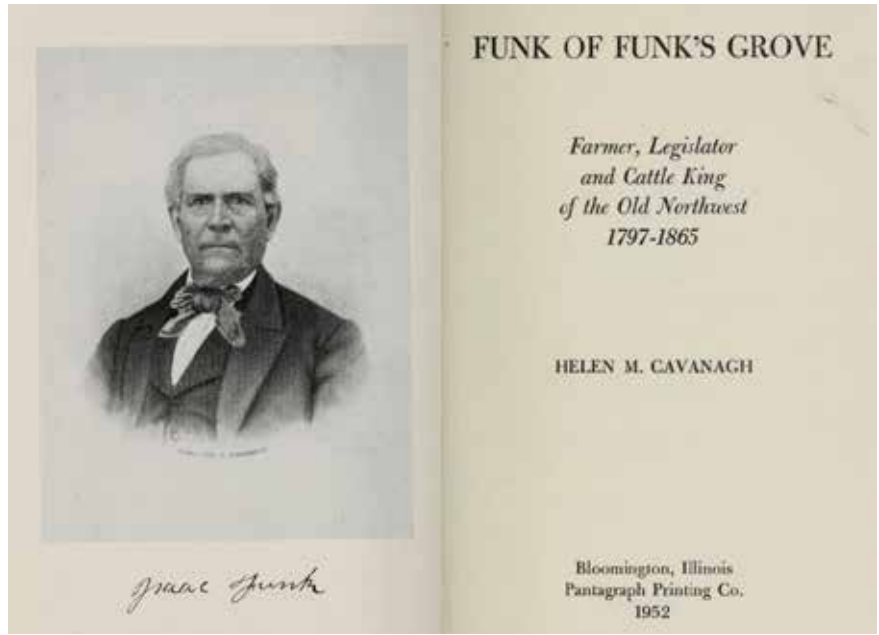
PAST PRESIDENTS

David Ashbrook	Steve Wannemacher
Rob Fazzini	Robert Watkins
Edward B. Jelks	Carol Struck
Benjamin J. Rhodes	Michael G. Matejka
Don Skaggs	Craig Alexander
John Meek	

DIRECTORS EMERITI

Barbara Allsup	Edward B. Jelks
David Ashbrook	James A. Stahly
Carl Behr	Carol Struck
Willie Brown	Steve Wannemacher
Nancy Froelich	

History Reads Book Club



All avid readers are welcome to join us on Tuesday, August 1 at the McLean County Museum of History for the third *History Reads Book Club* of 2017. The discussion will begin at 7 p.m. in the Governor Fifer Courtroom. In theme with the recent opening of the Museum's new exhibit, *Challenges, Choices, & Change: Farming in the Great Corn Belt*, the book club is reading *Funk of Funk's Grove: Farmer, Legislator, and Cattle King of the Old Northwest, 1797-1865* by Helen M. Cavanagh. Far before Monsanto and GMO, Funk Brothers Seed Company's hybrid corn is where the story of modern Central Illinois agriculture begins.

This free, quarterly program is brought to you by the Museum and Bloomington Public Library. The discussion will last approximately 60 minutes. Participants are encouraged to explore the Museum before the meeting. Free parking is available at the Lincoln Parking Deck, located one block south of the Museum on Front Street.

Copies of this book will be available for checkout at Bloomington Public Library or may be requested via interlibrary loan through your local public library. The full text is also available electronically on archive.org. The Museum looks forward to seeing our local literature lovers in August!

For those interested in continuing the conversation, the Museum, with Funk Prairie Home Museum, has arranged a tour of the Funk homestead on Saturday, August 26 at 1 p.m. for book club attendees. The tour requires a minimum of five and a maximum of 20 participants.

For more information on this program please contact the Museum's Education Department by email at education@mchistory.org or by phone at 309-827-0428; or contact Karen Moen at Bloomington Public Library at reference@bloomingtonlibrary.org.

McLean County Museum of History Welcomes Our New Members!

Dr. Carmen Ferradans	Jennifer Johnson
Mrs. Lyn Misner	Nancy and Don Rutledge

Museum membership is an act of philanthropy that supports local history, preservation, and education for the entire community. Each membership also offers direct benefits to you and your family with free admission to the Museum and Library/Archives, 10% off in the gift shop, member price for event tickets, and our Time Travelers reciprocal membership that offers free and discounted admission to hundreds of sites across the U.S.

Join today at www.mchistory.org!

Movies Under the Dome: *The Wizard of Oz*

Put on your ruby slippers and follow the yellow brick road to the McLean County Museum of History for a special week-end matinee of *The Wizard of Oz*! The fourth installment of our **Movies under the Dome** series takes place on Saturday, August 5 at 1 p.m. This program is free and open to the public.

Celebrate the end of summer with this 1939 classic about a Kansas farm girl transported to a fantasy land of magic, danger, and Technicolor!

Discover Dorothy's surprising connections to Bloomington-Normal. Get creative during an intermission packed with fun activities for the kids. And while you're at it, be sure to take a peek at rarely-seen, movie-themed items from the Museum's collection. Stick around after the show for a chance to win prizes. Costumes are encouraged!



The Wizard of Oz has a run time of 1 hour 52 minutes and is rated PG for mild violence and suspenseful situations. Drinks and popcorn will be available for purchase. Don't forget! It's the last day to donate to the **Back 2 School Alliance** supply drive. Bring in new school supplies and receive a free bag of popcorn! Check the Alliance's website for a list of approved items: www.back2schoolalliance.org/?page_id=140.

For more information, contact the Education Department at education@mchistory.org or 309-827-0428.

Museum in Search of Pedal Car Memories

The McLean County Museum of History will feature vintage pedal cars in an upcoming exhibit. But we need your help!

We hope to incorporate local reminiscences into this exhibit and request your assistance in collecting photographs and personal stories of pedal cars. If you are interested in sharing an image and memories of your favorite childhood pedal car, please contact Education Outreach Coordinator Anthony Bowman by **July 10, 2017**. He can be reached at abowman@mchistory.org or 309-827-0428.

Happy pedaling, and stay tuned for more details about this project later this year!



Before he was a Museum board member, Mike Matejka cruised along the sidewalks in this BMC dump truck pedal car. Mike recalled, "furiously pedaling up and down the sidewalk on Newport Avenue in south St. Louis...I rode it so often I wore off the rubber tires. We took it to a bike shop by Tower Grove Park in St. Louis, and I remember it up on a high shelf on a noisy machine, the wheels spinning mechanically, as a new layer of hard rubber was added."

Suffrage in Stitches

with Katherine Durack

Join the Museum in welcoming Katherine Durack, Ph.D. and crochet designer, who will present a trunk show program that will explore the curious connections between needle arts and women's suffrage. This free program will be held on Tuesday, June 6 at 7 p.m. in the Museum's Governor Fifer Courtroom and is open to anyone.

Durack began the *Suffrage in Stitches* project with a goal to commemorate and raise awareness of the women who committed their lives so that all women in the United States could have the right to vote. She also hopes to raise awareness of historic sites associated with suffrage, and encourage others to participate in the project. This five-year project will culminate with the 100th anniversary of passage of the 19th Amendment, which gave women the right to vote in 1920. Durack's trunk show includes stories about forgotten

activists who sacrificed so women could vote in America; raises awareness of local and national women's history sites; encourages audience members to participate in creative remembering and retelling by making their own versions of the crocheted projects; and encourages audience members (both men and women) to value and exercise their right to vote. Her program will be illustrated with displays of original crochet designs inspired by the history and heroes of the women's suffrage movement. Her non-partisan, civically inspirational program will offer a unique glimpse of history for those who crochet and for those who don't.

Katherine Durack is a Cincinnati crochet designer, scholar, and storyteller. Formerly an award-winning academic, Durack founded Patterns for Success LLC in 2014 after 15 years at Miami University in Oxford, Ohio. In April of this year, she was named the Ohio representative to the national board for the Turning Point Suffragist Memorial



Association. This group is committed to raising funds to build a memorial in Occoquan Regional Park in Fairfax County, Virginia. Durack guesses she was about eight years old when she first learned how to crochet. After a decades-long hiatus during her academic career, she picked up her hooks again in 2008.

For more information about this program, please contact the Education Department at education@mchistory.org, call 309-827-0428, or visit www.suffrageinstitches.com.

Cogs and Corsets: A Steampunk Happening Set for June!

Yearning for a time and place where nineteenth century steam power still rules, ladies and gents strut the streets in corsets and waistcoats, and retro-futuristic flying inventions grace the skies? Then you are in luck! The time is almost nigh!



Plan to visit Downtown Bloomington the weekend of June 2-4 when fantasy will become reality during *Cogs and Corsets: A Steampunk Happening*. Festival goers will be treated to such delights as a Tesla Coil demonstration sponsored by Red Raccoon Games, a maker's faire, a costume contest, splendid tea pot racing, strolls around the Museum Square, and vendors galore.

Join the Museum on Saturday, June 3 from 9 a.m. to 5 p.m. when our second floor Courtroom will be transformed into Lady Jarden's tea room. From 10 a.m. to 5 p.m. the third floor Classroom will play host to hourly workshops with topics including: goggle-making (walk away with your very own crafted pair of goggles made with instruction from IWU theatre faculty), faux finishing (learn from ISU theatre faculty how to distress Steampunk costumes and accessories), and railroad history with Museum board member Mike Matejka. Finally, learn tried-and-true tips for creating your own Steampunk persona from the originator of TeslaCon himself, Eric Larson (aka Lord Bobbins). Larson's 30-year career in art direction and design connected him with clients including Lucasfilm Ltd., Disney, and Warner Bros. Studios. Eight

years running, TeslaCon in Madison, Wisconsin is the largest immersive Steampunk convention in the nation. Be sure to also keep an eye out for an exclusive display of rarely seen steampunk themed artifacts from the Museum's collection.

To match the excitement happening indoors, Finnigan Farms will display antique steam tractor engines at the corner of Jefferson and Center streets during the Farmers' Market until 4 p.m. showcasing the power of steam.

The Museum in collaboration with the Children's Discovery Museum will also be offering family-friendly activities on the lawn from 10 a.m. to 1 p.m. Step right up to explore the science of hydraulics and flight! Make and take your own recycled, Steampunk parachuter, launch a tea-bag hot air balloon, and then challenge a friend to the Museum's take on tea dueling. After all, we couldn't let all of those tea leaves go to waste! Also, be sure to swing by the night before during First Fridays to snap a pic with Steampunk Abe.

Admission to the Cogs & Corsets festival is free to all, with many of the events, contests, and workshops open to the public. Premium Event tickets for

activities such as the Steampunk Soiree, Lock & Key Burlesque, Historic Mansion Tours & Tea, and Farm-to-Fork Epiphany dinner are available for purchase at www.cogsandcorsetsil.com.

All events hosted by the Museum are free with the exception of a \$5 charge for Lady Jarden's tea room and a \$6 charge to cover the cost of goggle-making supplies. Admission to the Museum will be free all day Saturday.

For more information about *Cogs and Corsets: A Steampunk Happening*, visit the festival website, or "like" the group's Facebook page at www.facebook.com/CogsAndCorsetsIL.



Lincoln's Festival

(Continued from page 1)

From 9 a.m. until 4 p.m., back by popular demand, will be the *So you think you know Lincoln?* trivia game! Contestants can test their knowledge about our sixteenth President with a spin on our trivia wheel. New this year will be the addition of *Kickin' it on Route 66* trivia. This activity will test participants' knowledge about the entire route. Prizes will be awarded for correct answers! Trivia will continue on Sunday, July 16 from 10 a.m. to 2 p.m.

At 10 a.m. Saturday, the Museum's Executive Director Emeritus, Greg Koos, will lead the highly popular walking tour of *Lincoln Sites in Downtown Bloomington*. The tour lasts approximately 45 minutes and participants will be able to gain unique insight into Lincoln, his friends and associates in Bloomington—the town where he spent more time than any other place outside of Springfield. Those interested in joining this tour must meet inside the *Cruisin' with Lincoln on 66* Visitors Center, located on the ground floor of the Museum.

At 1 p.m. in the second floor Governor Fifer Courtroom, local historians Mike Matejka and Terri Ryburn will present *Pioneer Pathway: Route 66 through McLean County*. Drawing a straight line from Chicago to St. Louis takes one right through McLean County and Bloomington. From the 1850s railroad construction, to the early "hard road" days, the Route 66 railroad and highway corridor is a critical transportation link. Participants will be taken back in time to see how the railroad and then Route 66 affected our local community and its development. Mike Matejka is a Museum board member, past President, and guest curator for the Museum's next permanent exhibit *Challenges Choices and Change: Working for a Living*. He is also the Governmental Affairs Director for the Great Plains Laborers District Council. Terri Ryburn wrote her doctoral dissertation about Route 66. She retired from Illinois State University to restore a local 1930s

Route 66 icon: Sprague's Super Service on Pine Street, now owned by the Town of Normal. There, Ryburn will open Ryburn's Place, a visitors center and gift shop.

At 2:30 p.m. in the Governor Fifer Courtroom, the Museum is pleased to welcome Dr. James Cornelius, curator of the Lincoln Collection at the Abraham Lincoln Presidential Library and Museum in Springfield, who will present the program *Lincoln in History, Fiction, and Film*. Most of us have seen or read about Lincoln portrayed in fiction—movies, plays, novels, etc. Some are historically pretty good; some, less so, and some terrible as history. Cornelius's illustrated program will touch on the highlights, midlights, and lowlights, ranging from Thomas Edison to Steven Spielberg, from McLean County's own Wilson Tucker (a sci-fi Lincoln of 1958) to the hated-novel of 2016; to vampires and other "alt-uses" of Lincoln as a fictional character. This program is suitable for the whole family!

James Cornelius is a native of Minneapolis. He earned a B.A. from Lawrence University in Wisconsin and a Ph.D. from the University of Illinois at Urbana-Champaign. After working as an editor in New York City for 10 years and eight years in the University of Illinois Library's collections of Lincoln and Illinois history, he began his career at the Abraham Lincoln Presidential Library and Museum in Springfield in 2007. He has written or edited several books, mainly on American and British history. In 2016, Cornelius co-authored *Under Lincoln's Hat: 100 Objects that Tell the Story of His Life and Legacy*.

At 1 p.m. on Sunday, July 16 in the Governor Fifer Courtroom, the Museum's Executive Director Emeritus Greg Koos will present *Grids: Travel in a Prairie Place*. This program will explore the development of a Central Illinois road system that ranged from dirt right of ways, smoothed with wood drags, to the four-lane Route 66 with its one-hundred-mile-an-hour curves. And



from there to the information highway!

Keep an eye out for Mr. Lincoln who will be visiting the Museum during the festival. He will be available to meet visitors and even do a photo or two. Check back in our July monthly mailer for more details about his visit.

Don't forget to visit the *Cruisin' with Lincoln on 66* Visitors Center located on the ground floor of the Museum. You can explore our exhibit to learn what traveling in Lincoln's era was like and about Route 66 in McLean County! You can also pick up many local favorites like Beer Nuts, Funks Pure Maple Sirup, Steak 'n Shake, great local history books, and of course books and souvenirs about Abraham Lincoln!

The Lincoln's Festival on Route 66 is an Illinois Route 66 Red, White, and Blue Corridor signature event and is a proud partner in the 42-county Looking for Lincoln Abraham Lincoln National Heritage Area. For more information about any of the activities and programs occurring at the Museum during *Lincoln's Festival on Route 66*, please contact the Education Department at education@mchistory.org.

Other locations participating in the festival include: Downtown Bloomington, McLean County Museum of History/*Cruisin' with Lincoln on 66* Visitors Center, Bloomington Center for the Performing Arts, Franklin Park, Bloomington Public Library, David Davis Mansion State Historic Site, and Illinois Wesleyan University.

For more information about *Lincoln's Festival on Route 66*, please visit www.lincolnsfestival.net.

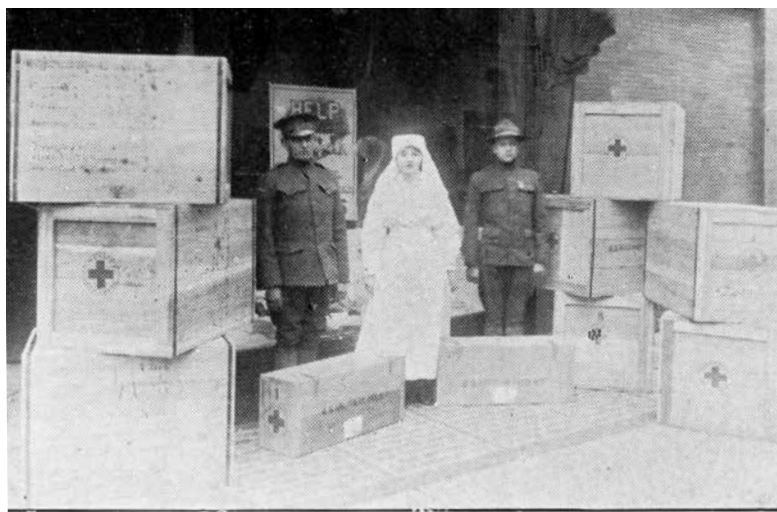
2017 *Evergreen Cemetery Walk* to Commemorate the Centennial of World War I

The Museum, in partnership with Illinois Voices Theatre and Evergreen Memorial Cemetery, is pleased to announce that this year's featured characters all played a part in the war effort—at home, abroad, or on the field of battle. Each story will illustrate the important role McLean County citizens played in “the war to end all wars.”

For a sneak peek on who this year's characters are, please visit www.mchistory.org/learn/programs/cemwalk.php.

The 2017 *Evergreen Cemetery Walk* will be held on Saturdays and Sundays, September 30, October 1, 7, and 8 with tours at 11 a.m. and 2 p.m. each day. Advance ticket sales begin September 5 and are \$17 for the general public, \$14 for Museum members, and \$5 for students 18 & under w/ID. Receive \$2 off public and member tickets when purchased at least 24 hours before the performance. No discount on student tickets.

The generous support of the Evergreen Memorial Cemetery and the Illinois Prairie Community Foundation has allowed the Museum to waive admission fees for students and chaperones once again. This will allow almost 2,000 students and chaperones in grades 6-12, and home school families to attend the Walk free of charge.



First shipment of Red Cross Hospital supplies from County Chapter, May, 1917. Persons in picture—Miss Caroline Schertz, nurse; Corp. Burns, Sergt. Lishka.

One of this year's feature characters, Carolyn (Schertz) Geneva (pictured center), was a nurse who worked through the American Red Cross to help people at home before the war. Once the U.S. joined the war, she served in the Army Medical and was stationed in England where she cared for wounded soldiers.

McLean County Home Front During World War I with Bill Kemp

To commemorate the centennial of World War I, Museum Librarian Bill Kemp will present an illustrated program on the McLean County home front during World War I at 1 p.m. on Saturday, August 19. This program will be held in the Governor Fifer Courtroom located on the Museum's second floor, and is free and open to the public.

The “Great War” involved a host of home front activities: war bond drives, food conservation efforts, the shipment of Red Cross supplies, patriotic parades, and public gatherings to sing patriotic songs. There was also a dark side to the war, including the suppression of a large, thriving, local German community.

Bill Kemp has served as the Museum's librarian for 14 years. Prior to that, he was at Milner Library, Illinois State University, for eight years. Kemp is also the author of a weekly *Pantagraph* column, “A Page from Our Past,” which debuted in the Sunday *Pantagraph* in December 2005. To date, Kemp has written over 550 installments of his column on a variety of local history topics ranging from baseball to the railroad, racism to local artists, and more.

For more information on this program and for a complete list of programs commemorating the World War I centennial, contact the Education Department at education@mchistory.org or call 309-827-0428.

Save the Date!

Human Library at the McLean County Museum of History

On Saturday, July 29, from 10 a.m. to 12 p.m. the Museum will host a *Human Library* experience.

Founded in Denmark 17 years ago, the *Human Library* initiative is designed to promote dialogue, reduce prejudices, and encourage understanding by bringing people together for intentional, face-to-face conversations.

We hope you'll join us for this unique community program. Keep an eye out for updates via social media and Museum publications.

This free program is presented in partnership with the University College at Illinois State University and being held in conjunction with the exhibit, *Challenges, Choices & Change: Making a Home*.

Board Member Q&A

Board President Carolyn Yockey reflects on her eventful two-year term



"This has been a very positive experience, more than I anticipated," says Yockey. "I feel I have carried on the family legacy as the Orendorffs (ancestors of Yockey's) were among the first settlers and involved in starting the Historical Society. It is quite enjoyable to bring our grandchildren into the Museum to connect them with their heritage."

It's been two hectic and momentous years for the Museum. What do you see as the most significant

accomplishment during your tenure as Board president?

Our great moments relate to the *Extending Excellence* capital campaign with new galleries and our transition from Greg to Beth. I was delighted that we completed our campaign as well as we did, and it was great fun to announce the results at the *History Makers Gala* in 2016. The three new galleries are a fantastic addition to our Museum and are bringing more new people every day. We look forward to the other two exhibit openings. We worked with Greg and Beth to make a smooth transition from one to the other, and I have also been delighted that it went so well.

What was the biggest surprise during the past two years?

Growth in awareness in the Community—I expected some but it has been even better. We have been in the news more often for strong positive achievements and events, so more people are aware we have a Museum here and are open for them to enjoy.

What is the most pressing challenge facing the Museum today?

Money is always a challenge. People know we raised \$3 million for the campaign and feel we should be well-funded. However, that is a

restricted fund, and income continues to be important to keep the lights on and hire the wonderful staff that enables our fantastic programs in the Museum and around the community. We will continue to balance the funds we have with making good decisions about using them, but there will be so much more we could do.

Do you have any advice for the incoming Board president?

Work closely with Beth and rely on the Board members. The Board consists of creative, dedicated people who have loved the Museum and Historical Society for years and want to keep it successful.

Do you have any plans, personal or otherwise, once you step down as president and have more free time?

I hadn't given this much thought. It seems there are always things to do, so I am not sure I will have more free time. I will certainly continue to be involved in the Museum and be in it often. I would like to spend more time with family history that is stored in our house, documenting and organizing it so our children will know what we have. More recently, there are many photos to organize. I also love to do needlework and have a number of projects waiting for me.

Museum at the State Fair

What's better than cattle shows, corn dogs, giant slides, and cows made completely out of butter? All of those things plus fun and games with Museum staff! Mark your calendars for Saturday, August 19 and join the Museum for a second year at the Illinois State Fair in Springfield from 9 a.m. to 4 p.m. Find the Museum's table stationed outside the Illinois Building in the *Looking for Lincoln* area (with indoor bathrooms in close proximity)! Test your knowledge of Route 66 and Abraham Lincoln by taking a spin on the



Museum's trivia wheels. Prove yourself an expert to collect a prize! Bribes of deep-fried candy bars will be regretfully declined. Can't wait to see you there!

Back 2 School Supply Drive

- We Need your Help!



Now through the first weekend of August, the Back 2 School Alliance will be collecting school supplies for local students in need for the upcoming 2017-2018 school year.

The Back 2 School Alliance is a group of volunteers and community partners who are dedicated to supporting students in need. The Back 2 School Supply Drive, sponsored jointly by District 87 and Unit 5, will help ensure that all students have a great start back to school on Day One. The supplies collected will be distributed to students who participate in the Back 2 School Party on August 9 at the U.S. Cellular Coliseum and throughout Unit 5 and District 87.

Donations bins are located at the McLean County Museum of History, Normal Unit 5 and Bloomington District 87 unit offices, Mid Central Community Action, the United Way, YWCA, and many other participating locations.

For more information and for a full list of donation bin locations, please visit back2schoolalliance.org/.

- Backpack- 13 inches to 18 inches in height
- Zippered Binder- 1.5 inches or 2 inches
- 3-Ring Binder- 1.5 inches
- Divider Tabs- 5 count per package
- 2-Pocket Folders
- Index Cards 3x5 lined
- Spiral Notebook- wide ruled, 70 count pages
- Loose Leaf Paper- wide ruled
- Ruler- standard/metric 12 inches
- Colored Pencils- 12 count
- Markers- washable, thick, classic colors
- #2 Pencils- 12 count
- Black or Blue Pens- 10/12 count
- Glue Sticks- washable
- Crayons- 24 count
- Highlighters
- Fiskar Scissors (blunt and pointed tip)
- Pink Erasers

Thank you!



A Moment in History

JULY 2000



Artist Harold Gregor's "Cornmin Miranda" figure was one of many "Corn-on-the-Curb" public art pieces on display in Downtown Bloomington during the summer of 2000. The "Corn-on-the-Curb" program, which ran 2000-2001, was a response to Chicago's popular "Cows on Parade" in 1999. Then-Mayor Judy Markowitz and Marlene Gregor thought a similar display emphasizing corn would be a nice addition to the city's sesquicentennial (150th) anniversary celebration in 2000. Steve Ross of Lexington designed a six-foot, fiberglass-reinforced ear of corn, which served as the model for more than a dozen identical ears that followed. These were distributed to local artists who used them to create a unique work of art. The "Sesqui!" celebration held July 1-2, 2000 around the Old Courthouse Square also included a 150-foot cake and a parade. The Lincoln bench that now sits outside our new ground-floor entrance was donated by Markowitz and installed on the north-east corner of the Old Courthouse, and an original play in honor of the sesquicentennial was staged at Illinois Wesleyan University. The McLean County Historical Society is preparing to celebrate its 125th anniversary, or quasiquicentennial, at our annual meeting on Thursday, June 15 at the *History Makers* Gala. Tickets are on sale at the Museum and www.mchistory.org. The Historical Society was founded in 1892 and opened its first local history museum in 1904 on the third floor of the same building we occupy today!

New perspectives on revocable living trusts

One of the most useful and flexible wealth management tools is the revocable living trust. Traditionally, we like to point to three basic benefits that these trusts offer.

Professional asset management. After studying your goals and circumstances, our asset-management specialists will map out a diversified investment program appropriate to your requirements. Our objective is not only to add to your financial security, but also to give you more opportunity to enjoy it.

Uninterrupted family financial protection. A living trust agreement can instruct us to perform a wide variety of special tasks when the need arises. With proper planning, living trusts can do much to avoid the financial management problems that arise during a prolonged period of incapacity—problems that might otherwise have to be dealt with by a court-appointed conservator.

Probate avoidance. Assets placed in a living trust are said to avoid probate because these assets are removed from your “probate estate”—the estate controlled by your will. Trust assets are distributed to beneficiaries, or held in continuing trust, as you direct in the trust agreement. Thus, using a living trust as the core of an estate plan usually leads to reduced settlement costs. More importantly, delays are avoided.

To get started

To set up a living trust with us, you give us your instructions in a trust agreement, prepared by your attorney, and transfer the stocks, bonds, investable cash, or other assets that you wish to place in your trust. Because the trust agreement is revocable, you can cancel the arrangement if ever you find it unsatisfactory. You also remain free to add assets, withdraw assets, or modify the terms of the trust.

Can resourceful management and responsive financial services eliminate all threats to financial security? Not quite. Always there remains an element of luck. But as a wise person has said, you can't hope to be lucky. You have to prepare to be lucky.

We look forward to assisting you in your preparations.

This information is not intended to be and should not be treated as legal advice or tax advice. Readers should under no circumstances rely upon this information as a substitute for their own research or for obtaining specific legal or tax advice from their own counsel. © 2017 M.A. Co. All rights reserved



**Let us help
you plan.**

When your focus shifts to **transferring your wealth**, a secure financial future takes on new meaning.

Wealth Management

hbtbank.com | 888-897-2276



 **Heartland
Bank** and Trust
Company

Not FDIC Insured	Not Bank Guaranteed	May Lose Value
Not Insured by Any Federal Government Agency	Not a Bank Deposit	

Donations to Collections

New to Collections

Sign and hat with attached buttons worn at Women's March on D.C. 2017; donated by Jacqueline Bauer

Buttons worn at Women's March on D.C. 2017; donated by Lindsey Earl

Sign carried at Women's March on Chicago 2017; donated by Lucille Eckrich

Sign carried at Women's March on Chicago 2017; donated by Carly Floyd

U.S. Boys Working Reserve uniform button 1918; donated by The Fort Lexington Genealogical Society

Lineman spikes c. 1930; donated by Elmer Kaufman c/o Gridley Telephone Museum

Sign carried at Women's March on Chicago 2017; donated by Patty Kelly

NAACP bumper sticker; Kennedy for City Councilman bumper sticker; 1987 NAACP Illinois State Conference badge; NAACP Freedom Day pin; NAACP member pins; NAACP banner; Merlin Kennedy's Santa suit; Suit worn by Merlin Kennedy; blouse and skirt worn by Beulah Kennedy; Architect's tools and desk chair used by Merlin Kennedy as an engineer at Eureka-Williams Company; Royal Model 440 typewriter used by Merlin Kennedy; collection dates c. 1960-1975 donated by Merlin Kennedy

Light bulb sold at Guy Carlton's shop c. 1902; donated by Greg Koos

Sign carried at Planned Parenthood Support Rally 2017; donated by Renny McBride

Collection of hand carved and painted fish and duck decoys c. 1990-2005; donated by Greg L. Owens

Bloomington Gold's Road Tour lapel pins c. 2000; donated by Jim Stahly

Collection of projectile points and lithic tools found in Downs from Early Archaic through Mississippian period; donated by Grace Sturgeon

Sign and button carried at Women's March on Chicago 2017; donated by

Collections Spotlight Featured Artifact

Doll — donated by Jill Vernon



The museum recently received this Normandy style doll, "Honorine," which was sent to Linda by her father Wilbur G. Ball while serving in France during WWII. The donation included the following letter from her father explaining how he came to own the doll.

"When we first arrived in France and set up working we heard that a French woman had been injured. Dr. Corrvin took care of her and she was very grateful as was her husband and family.

I wanted a gift for you. We were not permitted to leave the camp. A lady in Bayeux had a girl who had out grown her dolls. She likes the Americans and wanted you to have the doll. You see, four years of occupation completely depleted the doll supply. I wanted it completely French so a countess 'Countess D'Ursel' made the dress - hat etc. New material was not available. The countess is from

Belgium and usually spends one month a year in France in her chateau. France was invaded and she remains here. The costume is strictly Normandy. The doll is not quite right for such a costume so that if your mother wishes to get a different doll that will be fine.

The injured lady did this for you and said that a very good name would be 'Honorine' pronounced 'Onorine.' It is typically Normandy French."

Wilbur Ball attended Illinois Wesleyan University and received his degree in medicine. Dr. Ball returned to Bloomington after completing his degree in medicine and practiced at the Sloan Clinic. Linda Ball Scovil grew up in Bloomington and attended Bloomington High School. She moved to Oregon later in life and created her own publishing company.

Candace Summers

Sign and buttons carried at the March for Science Springfield 2017; donated by Candace Summers

Sign carried at Peoria Women's Rally 2017; donated by Callie VanAntwerp

Mitsubishi and Diamond-Star Motor Uniforms c. 1989-2016; donated by Glen Wallace

Collection of buttons worn at the March on D.C. 2017; donated by Shannon Walz
D. Bill calling card from Sugar Creek Arts Festival, 1995; canes carved by Walter Weinheimer c. 1996; donated by Jerry Weinheimer

Sign carried at Women's March on Chicago 2017; donated by Maria Luisa Zamudio

New to Library/Archives

Items relating to Brennan family, including funeral books and family group sheet; donated by Beverly Raucchi

Two Adlai E. Stevenson II-related vinyl records, including double LP "Stevenson Bandwagon Album," a Hollywood for Stevenson-Sparkman production, 1952; donated by Atta Kiarash

Public school diploma, McLean County, for Eva Nelson, May 11, 1912; donated by Jane Bower

Items related to attending presidential debate, October 9, 2016, Washington University, St. Louis, including program book and ticket; donated by Mike Matejka

Large collection of Antique Study Group II of McLean County Extension materials, including program booklets, 1977 to present, and minutes and treasurer reports, 1989 to present; donated by Antique Study Group II

CD, "Imaginary Friend," 2015, by local musician / singer-songwriter Jerry Meiss; donated by Jerry Meiss

"Prosperity Week" poster featuring Bloomington Corn Palace, 1915 or 1916, 14 x 22 inches; donated by

Robert E. Turnbull

Various items, including Sugar Creek Arts Festival flier, 1995, and news clippings relating to the Olde Towne Neighborhood Association; donated by Ruth Cobb

Engle family papers, mostly relating to the education of sisters Mary Elizabeth, Esther Annette, and Ruth Louise, discovered in attic of East Grove Street house; donated by John P. Elterich and Karen A. Schmidt

Several items, including "Souvenir of Bloomington, Illinois," a booklet published by the Commercial Club in 1912; donated by Kevin Callis

Research and writings of Virginia Louise Cochrane Campbell relating to family history; donated by Stephen Sabin Campbell

Survey of Ellsworth Cemetery, 1948; donated by Bill Cummins

Several items relating to nursing career, including poster, "brief history of one boy's experience with polio, Jerome Vogel, survivor;" donated by Shannon E. Perry

Cooksville High School diploma for Alvena Zabel, May 19, 1916; donated by Dorothy Schroeder Jones (daughter of Alvena)

Large collection relating to lives and careers of Geraldine McKeon and Marguerite McKeon Zinn, two sisters actively involved in the local telephone operators labor union; items include correspondence, paystubs, news clippings, union contracts, etc.; donated by Elaine Vincent

Two A.G. Erickson grocery store receipts, other items; donated by Gloria Erickson McKittrick

Six binders of Corn Belt Philatelic Society "Chatter" newsletters, covering years 1965-1989; donated by Mary Lynn Edwards

Collection of minutes from the Normal Avenue Neighborhood Club, 1940 to 2013, and club directories, 1951-2015 (with a few missing years); donated by Laurie Swindler

Two photo albums / scrapbooks—one on the Balinth family's arrival to Bloomington, 1953; the other on Josephine Munro recognition day, May 7, 1972; donated by Jill Vernon

(continued on page 12)

Library/Archives Collection Spotlight

Leroy's CCC Camp



In March of this year, Carol Parker of suburban Chicago donated a Depression-era photo album from her father's time in the Civilian Conservation Corps, one of better known New Deal federal work programs. Carol's father, Frank Tutomase, worked at the CCC camp in LeRoy, and one in Kanosh, Utah, if not elsewhere.

The local camp, in operation from 1934 to 1939, was located on the outskirts of LeRoy (the old grounds are now part of the Sunnyside subdivision). Much of the work involved erosion control. Camp LeRoy included five barracks (the accompanying photograph from the Tutomase album shows the interior of one such barrack). There was also a mess hall, canteen/recreation center, infirmary, headquarters, truck shed, classroom building, and baseball diamond.

Frank Tutomase passed away in October 2003, and we are grateful to his daughter Carol for donating his photo album to us.

Items relating to railroad telegraphy career of William Dunbar (1925-2012); donated by William's widow Blanche Dunbar

"How the National Association for the Advancement of Colored People Began" booklet (reprint of 1914 original), and flier on February 14, 1998 event at the Museum; donated by Jack Muirhead

Various items, including papers relating to Bob Knight, former Bloomington Junior High School principal, and other material; donated by Catharine Knight, care of Mary Knight Wright

Calendar, 1945, Rich's corner grocery, Gridley; donated by Ann Rich

Prairie Farms Creamery annual reports 1942, 1944-1946 and other items; donated by the Knuths

Vinyl record, EP, Harps of Tartarus, "Better than Better than Ezra," 2010; donated by Jared Alcorn, Waiting Room Records

Collection of material relating to career of Awadagin Pratt, including programs; Pratt Music Foundation, care of Darlene Miller

Nineteen trading cards of Illinois State University athletes who played professional sports, including Doug Collins (NBA) and Mike Prior, Aveion Cason, and Laurent Robinson (NFL); donated by Frank Kemp

Collection of booklets, guides, and posters from 1984 Democratic National Convention in San Francisco; donated by Thomas D. Whalen (a delegate to the convention)

Two CDs, "The Donald" and "Playing with Angels" by local musician Robert Holliday; donated by Robert Holliday

Collection of 50 "Those that Served" articles, profiles of Vietnam War veterans that appeared in *The Pantagraph*, 2015; donated by Frank W. Thompson

Brief history of Games Designers Workshop (GDW) and other GDW items; donated by Darlene and Marc Miller (Marc was a founding member

of GDW, a Normal-based role playing and board game company, 1973-1996)

Bloomington Gold Corvette show books, programs, and other items, 1989-2001; donated by Jim Stahly

Bloomington-Normal Junior Women's Club scrapbook, 1988-1989; donated by Mary Stanton

Brewster Food Service items, including plans for new building at corner of Main and Market streets, downtown Bloomington, 1976-1977; donated by Greg Backmen in honor of Robert and Suellyn Brewster

Various items, including undated roller skating poster and receipt for National Temperance Insurance League, 1900; donated by Donna J. Sinks

Photographs/Images

Undated photograph of St. Joseph's Hospital at former west side location; donated by Robert McLeese

Collection of photos relating to Geraldine McKeon and Marguerite McKeon Zinn; donated by Elaine Vincent

Large format photograph, 18 by 13 inches, of old Bloomington city hall, undated; donated by Pam Merrill

Color photo, 3 ½ by 5 inches, Alma Washington and Caribel Washington, Museum of History program, February 1998; donated by Jack Muirhead

Ten sheets of photo negatives from publication of Bloomington-Normal Lost: An Account of Our Vanishing Architectural Heritage (2000); donated by Marty Seigel

Photo taken by donor of Downtown Bloomington from atop the Illinois House, replicating photograph from same location and angle taken in 1914; donated by Keith E. Adams

Photo album of Frank Tutomase from his time in the Civilian Conversation Corps, including stops in LeRoy and Kanosh, Utah; donated by daughter Carol Parker

Collection of digital photographs taken at the Women's March, Chicago, January 21, 2017; donated by Anna Kerr-Carpenter

Photograph of Van Winkle and Hensel clothing store, circa 1920; donated by Donna J. Sinks

Books/Published Materials

The Initial Evaluation and Utilization of the Illinois Prairies, 1815-1840 (1964) by Douglas R. McManis; and *The Settlement of Illinois from 1830 to 1850* (1909) by W.V. Pooley; donated by Greg Koos

The Original White House Cook Book (1903); donated by Iris Caines

Immigrants in the Valley: Irish, Germans, and Americans in the Upper Mississippi Country, 1830-1860 (2016 reprint) by Mark Wyman; donated by Mark Wyman

The Custer Families (1912) by Milo Custer; donated by the Lexington Genealogical and Historical Society

Paradigm Rift (2014) by Randy McWilson, a time travel novel with Normal as a setting; donated by author Randy McWilson

Gridley and Meadows phonebook, 1951; donated by Ann Rich

Veterans of Foreign Wars, memorial edition, *Pictorial History of the Korean War* (1954); donated by Harlan Fuller

Agent of the Imperium: A Story of the Traveller Universe (2015) by Marc Miller; donated by Darlene and Marc Miller (Traveller was a popular role playing game developed and sold by Normal-based Game Designers Workshop)

Museum and Visitors Center Now Open Sundays

The McLean County Museum of History and the *Cruisin' with Lincoln on 66* Visitors Center and Gift Shop have begun a Sunday hours pilot program. Sunday operating hours for the Museum and Visitors Center will be from 10 a.m. to 2 p.m. every Sunday through September 24. During these hours the Stevenson Ives Library archives will not be open.

Saturday hours through October 28: Museum opens at 8:30 a.m. during the Farmers' Market. Free admission until noon.

Funding for the 2017 Sunday hours pilot program comes from the Bloomington-Normal Convention & Visitors Bureau.

Calendar of Events — ongoing programs and upcoming events

June 2 - 4

Cogs and Corsets: A Steampunk Happening

The Cogs & Corsets festival in historic Downtown Bloomington with 90 shops, galleries, and restaurants... many historic buildings with ties to Abraham Lincoln. See local artists' new work, history presentations, a tea room and, a stunning Tesla Coil demonstration lighting the night. Enjoy dining, dancing, workshops, a costume contest, promenade, Splendid Teapot Races, antique tractor and steam engine display, and Makers' Faire entries.

For registration/information:
www.cogsandcorsetsil.com/

June 6 7:00 p.m.

Suffrage in Stitches with Katherine Durack

Join the Museum for this fascinating program with Katherine Durack, crochet designer and Ph.D., who will present a trunk show program that will explore the curious connections between needle arts and women's suffrage. For more information about this free program, see page 3.

June 12 through 16

Futures in History Camp Session I

Building off the 14 year legacy of *History Careers Day Camp*, at *Futures in History Camp* campers entering fourth through sixth grades will explore the history-related careers of law, archaeology, architecture, museum studies, and environmental science during this week-long day camp. Campers will learn by spending time with professionals in each field and by exploring the Museum, the David Davis Mansion, and Sugar Grove Nature Center.

June 15

**Doors open at 5:30 p.m.,
program begins 6:15 p.m.**

6th Annual History Makers Gala

Join the Museum as we celebrate five individuals who have dedicated their lives to making our community a better place to live. 2017 honorees are: Craig Hart, Jeanne and Charles Morris, Jesse Smart, and Judy Stone. Their outstanding, lifelong contributions of time and talents have helped to make McLean County the thriving community it is today. The Gala dinner will feature live theatrical dramatizations to honor their lives. Tickets are available at the Museum or online at www.mchistory.org.

June 26 through 30

Futures in History Camp Session II

Please see Session I information above.

Starting July 1 through August 5 Back 2 School Supply Drive

The Museum will be helping the **Back 2 School** Alliance collect school supplies for local students in need for the upcoming 2017-2018 school year. The **Back 2 School** Supply Drive is sponsored jointly by District 87 and Unit 5. For more information, please see page 8 of this newsletter.

July 4

Museum closed for Fourth of July holiday



Futures in HISTORY Camp

at the
McLean County Museum of History
in partnership with the David Davis Mansion
and Sugar Grove Nature Center

**Explore futures in history in
law, archaeology, architecture,
museum studies, & environmental
science!**

Three Sessions

June 12-16
June 26-30
July 24-28
with Bloom Community School

For kids entering
4th-6th grades
in Fall 2017

Monday-Friday
8:30-3:30

Scholarships available!

**REGISTRATION
OPEN NOW**

\$125
Cost includes food,
supplies, transportation
to SGNC, and more!

MUSEUM OF HISTORY
For registration info, visit:
mchistory.org/learn/index.php

July 14-16

Lincoln's Festival on Route 66 - Trails, Rails, and Roads

Join the Museum for this annual festival, which has expanded to celebrate both Bloomington-Normal's ties to Abraham Lincoln and Route 66 as part of the Red, White, and Blue Corridor events on historic Route 66. *Lincoln's Festival on Route 66* will highlight Trails, Rails & Roads activities including: performances; car shows and cruise-ins; period crafts and children's activities; Civil War skirmishes and cavalry encampment; walking tours; vintage bicycles; plus speakers and musicians to share the journey along the prairie path, to the steel rails, and on the Mother Road. For more information about this three-day festival, including activities hosted by the Museum, please see page 5 of this newsletter.

July 14 5:00 - 8:00 p.m.

Lincoln's Festival on Route 66 - Encounters with Lincoln's Bloomington

Members of the Historic Acting Troupe will portray men and women whose experiences provide a travelogue that spans the generations and the miles, highlighting sights, sounds, and ideas that echoed throughout the nation. Performances will be held inside the Museum and at several other locations in Downtown Bloomington.

July 15 10:00 a.m.

Lincoln's Festival on Route 66 - Lincoln in Downtown Bloomington Walking Tour

Join Executive Director Emeritus Greg Koos for a 45-minute walking tour of sites associated with Abraham Lincoln in Downtown Bloomington. The tour will meet inside the Museum's *Crusin' with Lincoln on 66* Visitor Center.

July 15 1:00 p.m.

Lincoln's Festival on Route 66 - Pioneer Pathway: Route 66 through McLean County

Travel back with Mike Matejka and Terri Ryburn to see how the railroad and then Route 66 impacted our local community. This free program will be held in the Museum's Governor Fifer Courtroom.

July 15 2:30 p.m.

Lincoln's Festival on Route 66 - Lincoln in History, Fiction, and Film

Join the Museum in welcoming James Cornelius, Curator of the Lincoln Collection at the Abraham Lincoln Presidential Library and Museum in Springfield, for an illustrated program that will explore the highlights, midlights, and lowlights of Abraham Lincoln in History, Fiction, and Film. This free, family-friendly program will be held in the Museum's Governor Fifer Courtroom.

July 16 1:00 p.m.

Lincoln's Festival on Route 66 - Grids: Travel in a Prairie Place

Executive Director Emeritus Greg Koos will present a program that will explore the development of a central Illinois road system that ranged from dirt right of ways, smoothed with wood drags; to the four-lane Route 66 with its one-hundred-mile-an-hour curves; to the information highway! This free program will be held in the Museum's Governor Fifer Courtroom.

July 24 through 28

Futures in History Camp Session III

Please see Session I information on page 13.

July 29 10:00 a.m. - 12:00 p.m.

The Human Library Initiative

The *Human Library* initiative is designed to promote dialogue, reduce prejudices, and encourage understanding by bringing people together for intentional, face-to-face conversations. We hope you'll join us for this unique community program. The free program is presented in partnership with the University College at ISU and is being held in conjunction with the exhibit *Challenges, Choices & Change: Making a Home*. For more information, please see page 6.

August 1 7:00 p.m.

History Reads Book Club

Join the Museum and Bloomington Public Library for the third installment of the *History Reads Book Club* for 2017. The discussion will be held in the Museum's Governor Fifer Courtroom. For more information, please see page 2 of this newsletter.

August 5 1:00 p.m.

Movies Under the Dome: The Wizard of Oz

Come join us for the fourth installment of our new film series featuring movies with a McLean County connection. Along with a screening of the film, the program will include a display of thematic artifacts (some otherwise not on display) from the Museum's archival and object collection, and commentary about the film's local connection. Plus, bring in school supplies to donate to the **Back 2 School Supply Drive** and receive a free bag of popcorn! This program is free and open to the public. See page 6 of this newsletter for more information.

August 12 10 a.m. to 1 p.m.

Under the Dome Knit In

Knitters and crocheters — mark your calendars for another meeting of *Under the Dome Knit Ins!* The Museum welcomes all knitters and crocheters to come down and create charity items or work on your own project. This free program is open to the public.

August 19 1:00 p.m.

McLean County Home Front during World War I with Bill Kemp

This illustrated program by Librarian Bill Kemp explores the variety of home front activities — including war bond drives, food conservation efforts, shipments of Red Cross supplies, parades, and public gatherings to sing patriotic songs — that occurred during "The Great War" in McLean County. This free program will be held in the Museum's Governor Fifer Courtroom.

August 19 9 a.m. - 4 p.m.

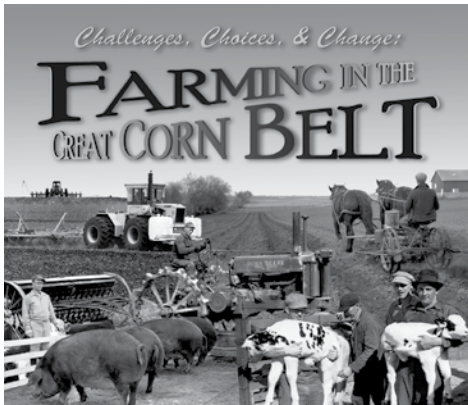
Museum at the Illinois State Fair

What's better than cattle shows, corn dogs, giant slides, and cows made completely out of butter? All of those things plus fun and games with Museum staff! Join the Museum for a second year at the Illinois State Fair in Springfield, outside the Illinois Building in the *Looking for Lincoln* area (plus indoor bathrooms in close proximity.) Test your knowledge of Route 66 and Abraham Lincoln by taking a spin on the Museum's trivia wheels, and collect a prize!

September 4

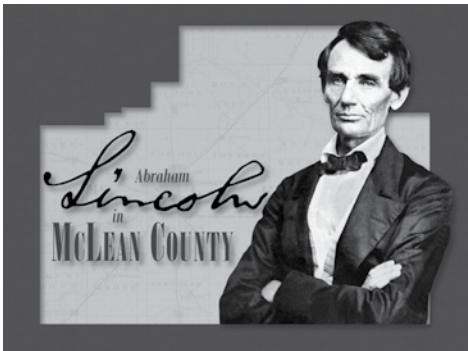
Museum Closed in Observance of Labor Day

EXHIBITS



Challenges, Choices, & Change: Farming in the Great Corn Belt

This unique exhibit will tell the story of farming as it was done by McLean County farmers. It follows a nearly 200-year timeline, using images and experiences of area farmers to tell their stories and revealing the difficult choices they had to make in order to be productive and profitable. Gallery interactives will demonstrate the drastic changes farming has gone through since frontier farmers first arrived, including the size of farms, urban sprawl, technology and equipment, and even the types of crops grown.



Abraham Lincoln in McLean County

This exhibit examines Lincoln's work as an attorney in McLean County and on the Illinois Eighth Judicial Circuit. It defines his pivotal role in the anti-slavery movement and the formation of the new Republican Party in Illinois, and makes clear the circumstances of his nomination for president in 1860. Through revealing reminiscences from the residents of McLean County, the exhibit explores the lasting connections Lincoln made with the people of this community.



Challenges, Choices, & Change: Making a Home

From the arrival of native people to the immigration of Asian Indians and Latinos in the late 20th century, this exhibit explores the experiences of individuals and families who came from all over the world to make McLean County their home. Their stories reveal the many challenges this diverse group of people faced after their arrival—stories of determination and hard choices, of maintaining traditions and inventing new ones, stories of how their lives unfolded and changed—stories of making a home.



Cruisin' with Lincoln on 66

Located on the ground floor of the Museum, the Visitors Center includes an exhibit that features many local Route 66 landmarks, past and present. It allows visitors to compare and contrast travel, dining, and lodging in Abraham Lincoln's time with that of the Route 66 heyday. The Visitors Center is free and open to the public during regular Museum hours.

Encounter on the Prairie: Work

This exhibit highlights the many occupations and industries throughout the history of McLean County. It contains photographs and objects associated with McLean County businesses, including many of the goods produced locally. While in the gallery, step inside the "prisoner holding cell" to await your trial in the courtroom!

Encounter on the Prairie: Politics

This exhibit provides insight into our political history through government, war, and education. Notable political figures such as Abraham Lincoln, David Davis, and Adlai Stevenson are highlighted, as are common people who have called McLean County home. Their stories teach the importance of education in the community and detail our involvement in military conflicts—from the Indian Wars through World War II.

McLean County Museum of History Staff

Beth Whisman
Executive Director

Susan Hartzold
Curator of Collections and Exhibits

Bill Kemp
Librarian

Candace Summers
Director of Education

Torii Moré
Curator of Digital Humanities

Jeff Woodard
Director of Marketing and Community Affairs

Lauren Lacy
Director of Development

Joe McDonnell
Visitors Center Manager

Emma Meyer
Registrar

Hannah Johnson
Education Program Coordinator

George Perkins
Archivist

Harlan Fuller
Bookkeeper

Betty Turchirollo
Volunteer Assistant

Lisa Elleson
Development Assistant

Anthony Bowman
Education Outreach Coordinator

Maureen Blair
Visitors Center Assistant



Non-Profit Organization
U.S. Postage
PAID
Bloomington IL 61701
PERMIT NO. 118

MYSTERY HISTORY

A fair number of Museum *On the Square* readers were able to identify last issue's mystery photo showing one of the sculptured faces topping two stone-and-cement pillars at the LaFayette Street entrance to Berenz Place. Henry C. Berenz, Sr., and his son Henry, Jr., the namesakes of this small residential development on Bloomington's south side, salvaged the two faces from a long-gone building at the corner of East and Monroe streets. "I've got just the place for them," Henry, Sr. said at the time.

The Mystery History photo featured a face accompanied with the inscription "Tiziano," identifying it as a likeness of the famed sixteenth century Venetian painter known in English as Titian. The other pillar includes the face of German sculptor Peter Vischer the Elder (1455-1529).

The Berenz family began developing this neighborhood in the late 1910s. "Ten years ago a potato patch," *The Pantagraph* said of Berenz Place in 1927. "Now dotted with 31 beautiful homes." At one time the north end of this residential street also featured two pillars, though these were topped by gargoyle-like statues. They were removed in the 1950s.

Readers who correctly identified the Titian pillar included Mark Allan Cooper, Susan and Rick Heiser, Margaret Hollowell, Jim Hoppe, Dan Irvin, Mike Matejka, Wally and Jeanie Morse, Ruth Stewart, and Nancy Westerfield. We apologize if we forgot anyone.



Can you identify this building? Do you know about when it was built and opened? Do you know what it was originally called and what it's called today? If you think you know the answer to these questions, contact Librarian Bill Kemp by email at library@mchistory.org, or by phone at 309-827-0428.